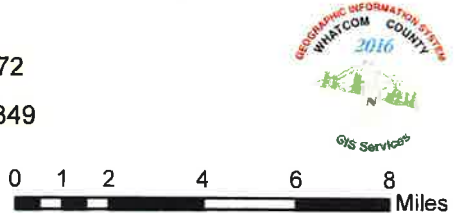


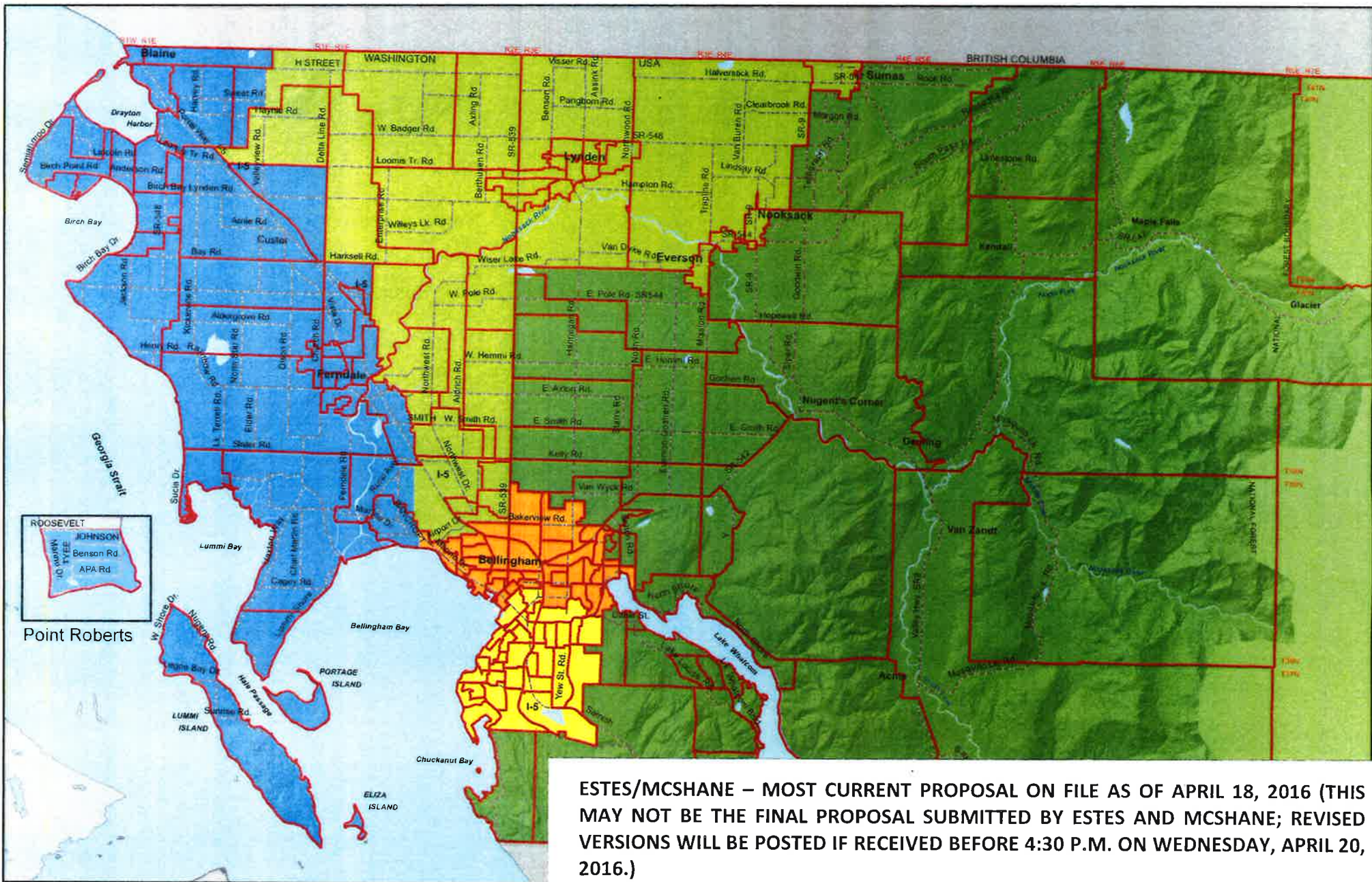
**BONNER/NELSON – MOST CURRENT PROPOSAL ON FILE AS OF APRIL 19, 2016 (THIS MAY NOT BE THE FINAL PROPOSAL SUBMITTED BY BONNER AND NELSON; REVISED VERSIONS WILL BE POSTED IF RECEIVED BEFORE 4:30 P.M. ON WEDNESDAY, APRIL 20, 2016.)**

**Brett Bonner**  
**4/19/2016**

**Legend**

- Coastal District - 41,370
- Farmlands District - 40,034
- Foothills/Lake Whatcom District - 38,134
- North Bellingham District- 41,172
- South Bellingham District - 40,349
- Precinct Boundaries





ESTES/MCSHANE – MOST CURRENT PROPOSAL ON FILE AS OF APRIL 18, 2016 (THIS MAY NOT BE THE FINAL PROPOSAL SUBMITTED BY ESTES AND MCSHANE; REVISED VERSIONS WILL BE POSTED IF RECEIVED BEFORE 4:30 P.M. ON WEDNESDAY, APRIL 20, 2016.)

**Mike Estes**  
4/18/2016

**Legend**

- Coastal District - 40,231
- Farmlands District - 40,231
- Foothills/Lake Whatcom District - 40,205
- North Bellingham District- 40,270
- South Bellingham District - 40,122
- Precinct Boundaries

