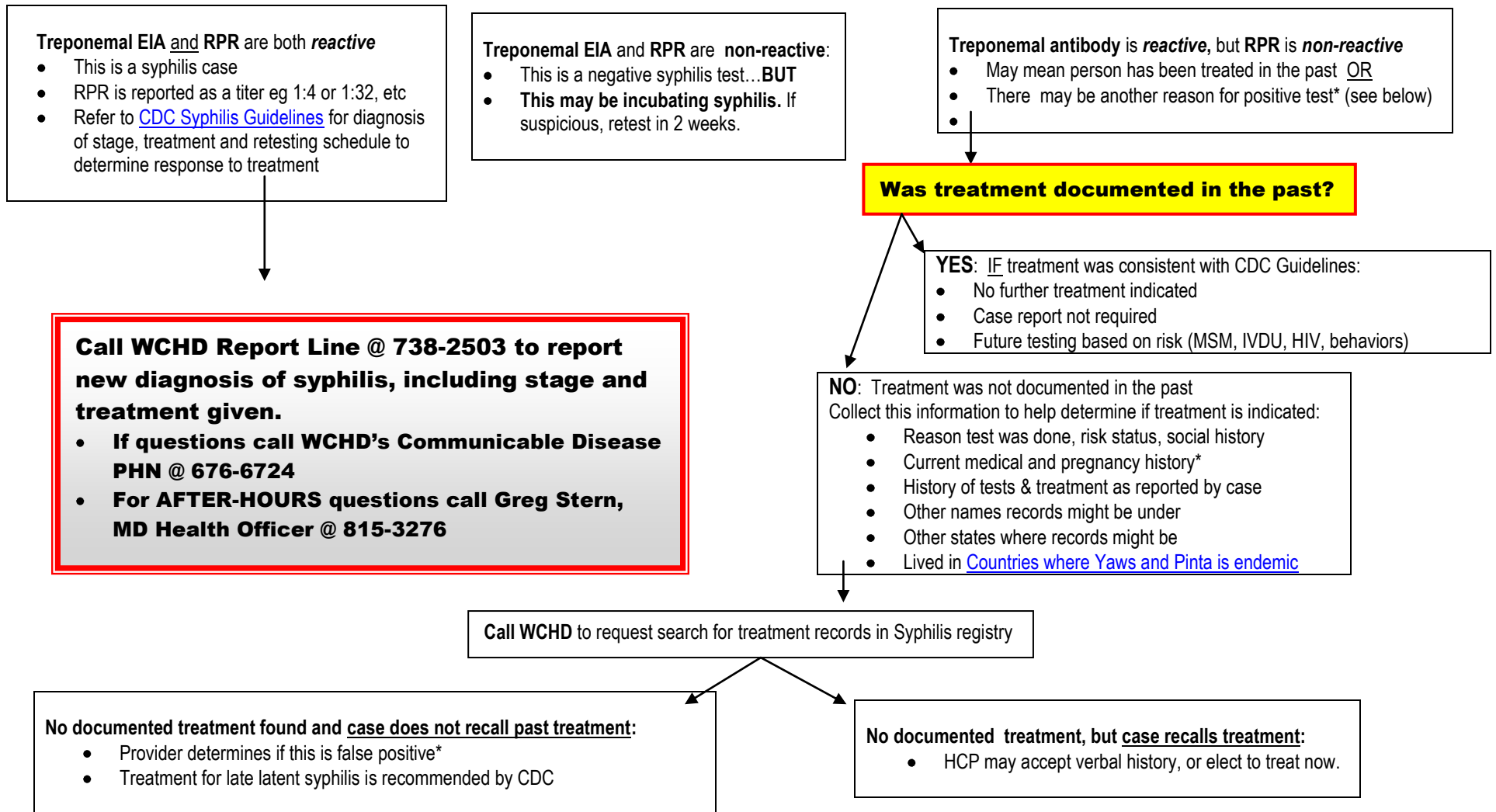


# ALGORITHM for Interpreting Treponemal Antibody Test Results

Wait for confirmation by the WA Public Health Lab (WA PHL)



**Syphilis tests:** Peace Health Lab: Treponemal chemi-luminescent immunoassay EIA antibody test . If reactive, a sample is sent to WA Public Health Lab for confirmation with a different test.  
WA Public Health Lab (WAPHL): Treponemal EIA, plus RPR. If results are discordant (reactive EIA, non-reactive RPR), a TPPA is done (T. pallidum passive particle agglutination assay).

\*Syphilis tests may be reactive causing **false positive** or inconclusive results in: <http://www.cdc.gov/mmwr/preview/mmwrhtml/mm6005a1.htm> and <http://www.nlm.nih.gov/medlineplus/ency/article/003533.htm>

- <1% of healthy persons; often transiently positive; cause unknown
- Persons from areas where yaws or pinta was or is endemic <http://emedicine.medscape.com/article/230403-overview#a0199> Some patients who are pregnant, or have HIV, TB, Lupus and some other autoimmune disorders, IV drug use, Hanson's disease, malaria, toxoplasmosis, others