

Loomis Trail Focus Area

Water Quality Status: Fecal Coliform Bacteria

as of May 18, 2017

Background: Clean water is a valuable resource; it is essential for human health and for the health of fish, shellfish, wildlife, and livestock. Water provides irrigation for crops, and a safe place for water-based recreation. To protect water quality, Washington State has developed criteria for bacteria levels in both fresh and marine waters.

Freshwater Standards

Geometric Mean

Average sample contains less than:
100 fecal coliform/100mL

- and -

90th Percentile

Less than 10% of samples contain over:
200 fecal coliform/100mL

What are Fecal Coliform Bacteria?

Fecal coliform bacteria are found in human and animal feces. Detection in a creek is a sign that pathogens from these wastes may be polluting the water. Contact with fecal contaminated waters can result in **gastroenteritis, skin rashes, upper respiratory infections** and other illnesses.

E. coli are a fecal coliform bacteria

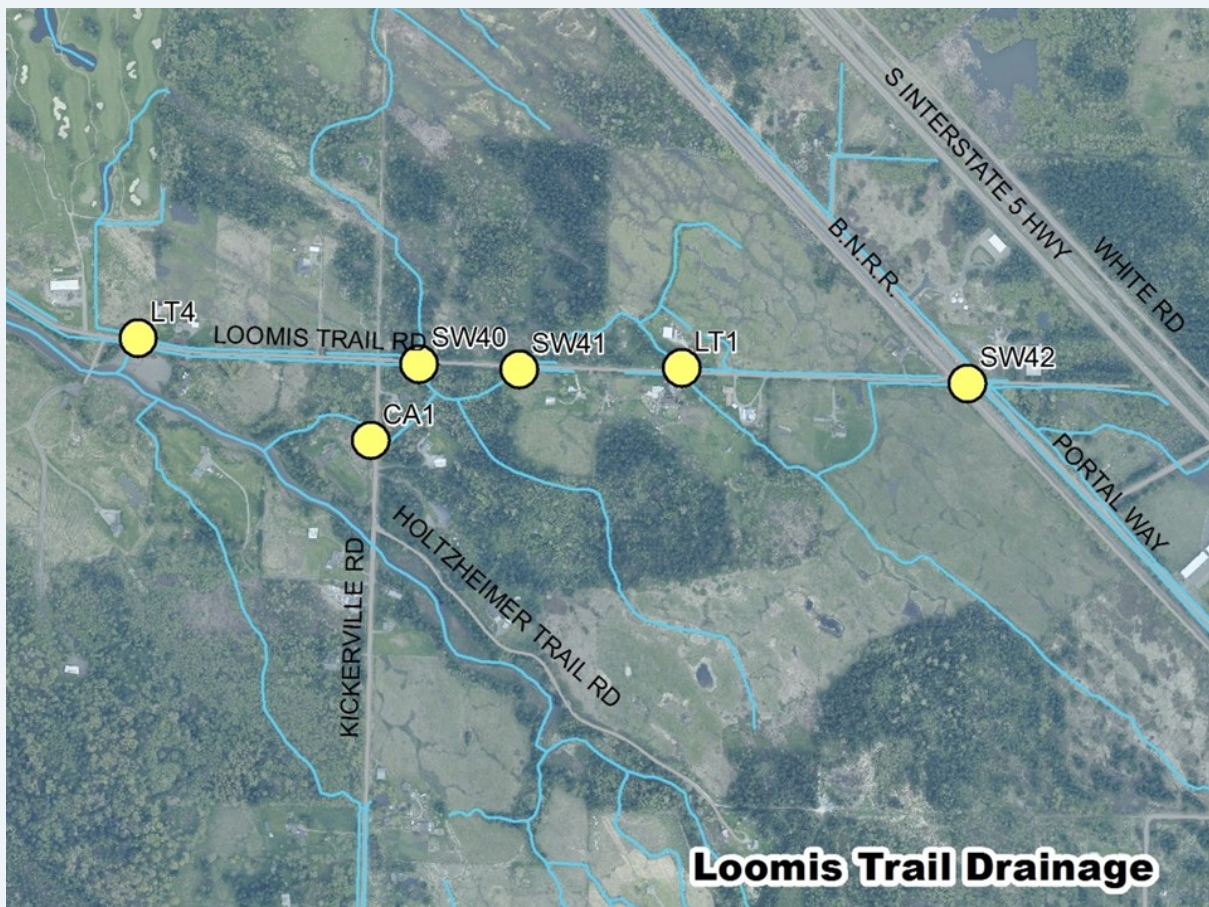
Where Does the Bacteria Come From?

Potential sources of bacteria include:

- 1) Animal waste from livestock, domestic pets, and wildlife
- 2) Human sewage from failing septic systems, leaking sewer lines or cross-connections between sewer and stormwater systems

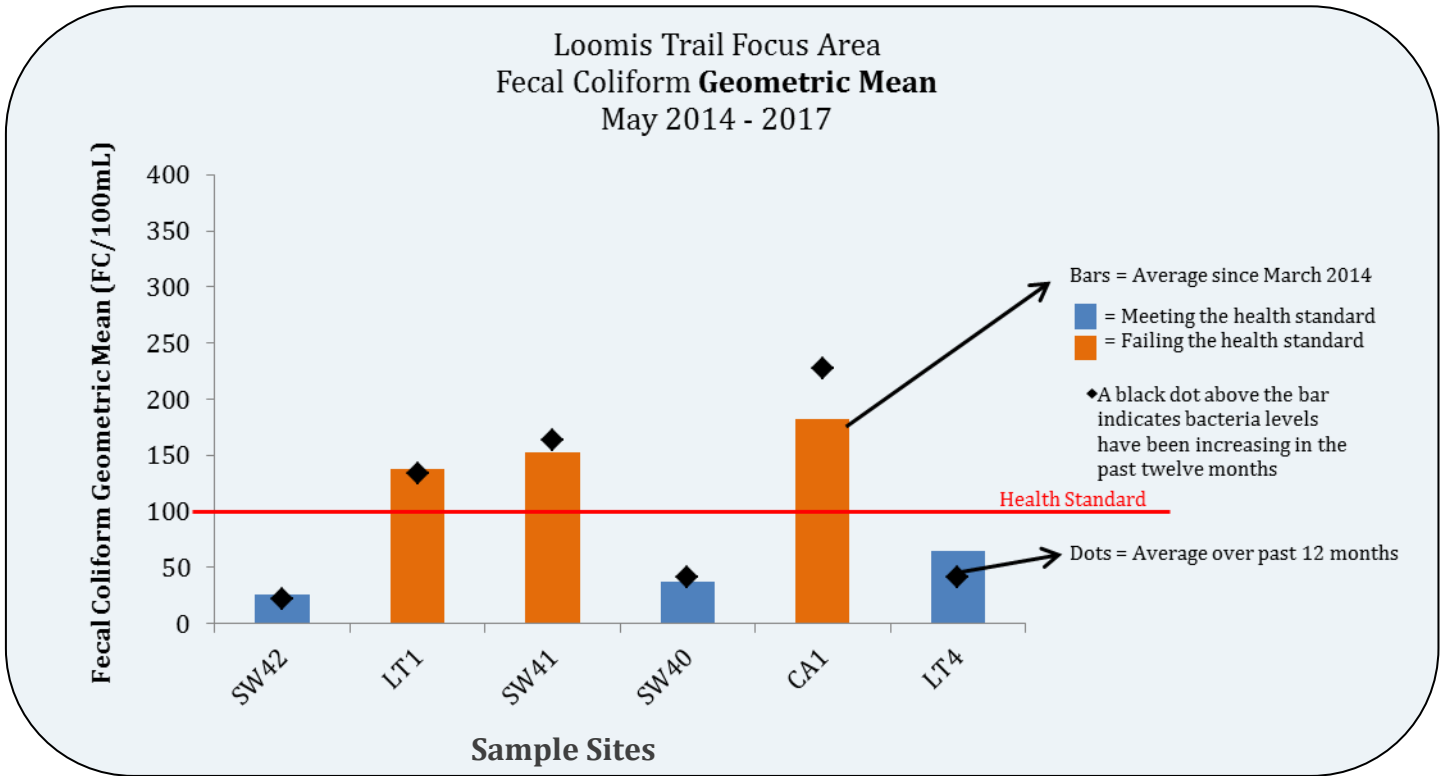
Focus Area Monitoring: The Loomis Trail drainage has been identified as a *focus area* for water quality monitoring due to high levels of bacteria observed through the routine monitoring program. Whatcom County Public Works (WCPW) has monitored fecal coliform bacterial in the Loomis Trail drainage area since November 2013.

Whatcom County Public Works Loomis Trail Water Quality Monitoring Stations

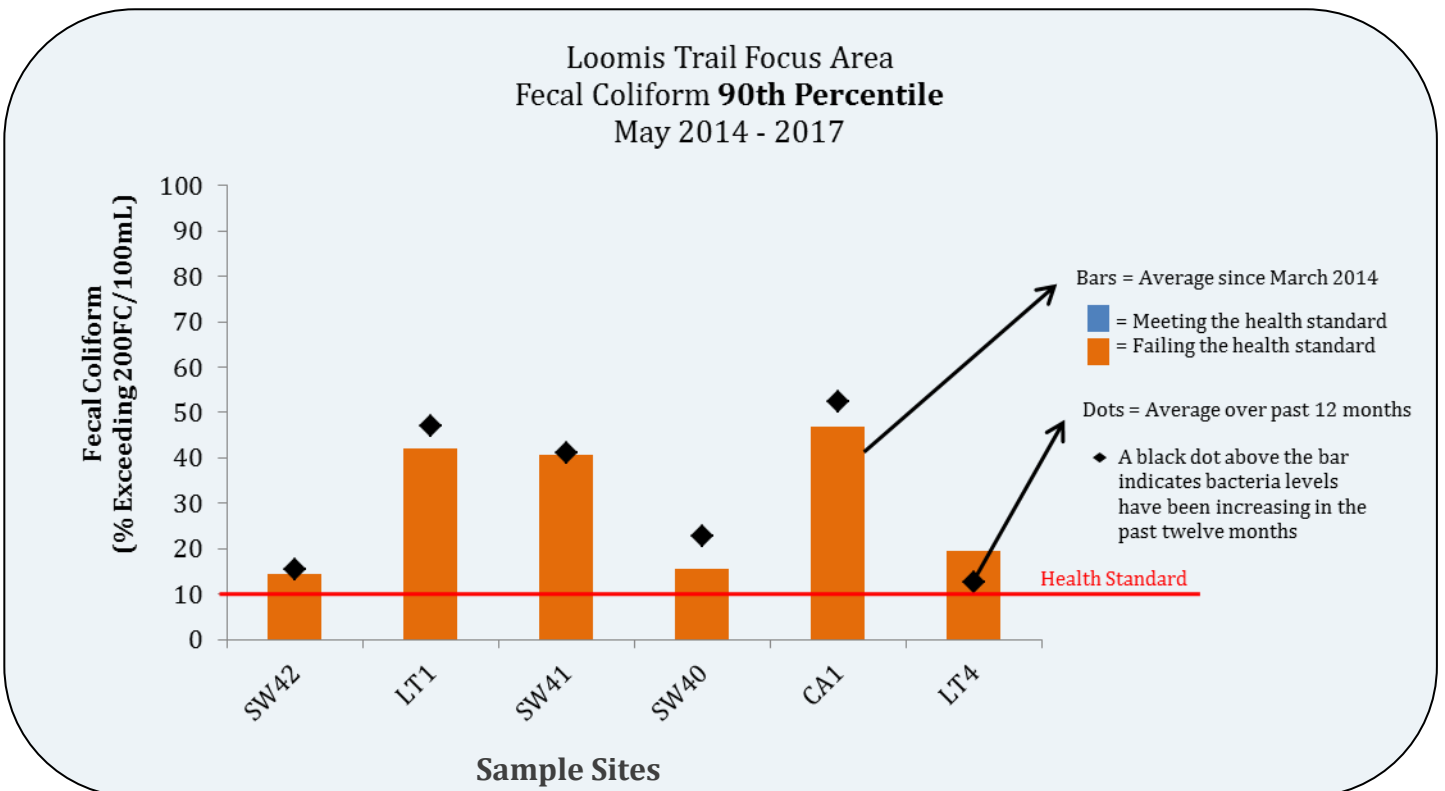


Loomis Trail Focus Area Comparison of Bacteria Levels to Health Standards

Refer to the map on page 1 or the tables on pages 3-4 for site locations.



*The bar must be blue on both graphs for the sample site to be meeting the freshwater health standard.



Loomis Trail Focus Area

13-Month Historical Fecal Coliform Bacteria Data

These tables provide the individual results at each station for the past thirteen months. Results in light orange exceeded 200 FC/100mL. Results in dark orange exceed 1000 FC/100mL.

Date	Ditch next to RR— connects to Loomis Trail	3rd Cross-Culvert on Loomis Trail, E of Kickerville	2nd Cross-Culvert on Loomis Trail, E of Kickerville	1st Cross-Culvert on Loomis Trail, E of Kickerville	Tributary at Kickerville Rd, South of Loomis Trail	Loomis Trail Road, East of Bridge Way
	SW42	LT1	SW41	SW40	CA1	LT4
5/4/16	48	35	54	ST	250	3,600
5/12/16	12	72	14		390	450
5/17/16	320	400	400		106	112
5/25/16	54	719	240	ST	4,600	ST
6/2/16	46	320	390	ST	1,019	ST
6/9/16	5	320	138	D	72	D
6/14/16	330	82	38	D	2,200	ST
6/22/16	44	112	290		350	
6/29/16	17	40	482	ST	128	D
7/7/16	700	11,500	655	ST	5,400	D
7/13/16	38	4,500	9,200	ST	4,300	D
7/20/16	330	ST	420	D	5,500	D
8/3/16	1,082	ST	1,082	D	2,900	D
8/17/16	46	ST	2,200	D	2,700	D
8/31/16	350	ST	4,900	D	919	D
9/8/16	156	1,591	719	D	240	D
9/21/16	86	370	290	D	240	LF
10/6/16	20	210	180	D	400	LF
10/19/16	5	90	35	510	50	35
11/2/16	72	300	490	300	628	430
11/9/16	32	550	40	58	72	50
11/16/16	7	48	92	33	92	78
11/30/16	9	25	41	46	52	32
12/8/16	2	71	82	7	66	19
12/20/16	35	102	192	260	330	410
12/28/16	10	28	43	15	46	32
1/5/17	4	90	68	NS	35	5
1/11/17	2	NS	16	2	36	12
2/2/17	5	98	94	600	270	ND
2/16/17	5	250	230	28	33	94
2/23/17	2	7	14	22	5	5
3/2/17	7	25	64	22	64	5
3/8/17	2	2	5	52	23	33
3/14/17	5	32	44	15	84	14
3/21/17	4	300	62	5	60	5
3/28/17	9	280	182	9	400	68

D- Dry, ST- Stagnant, LF- Low Flow,

Gray box indicated an event where no sample was collected for varying reasons.

Loomis Trail Focus Area Continued

	Ditch next to RR— connects to Loomis Trail	3rd Cross-Culvert on Loomis Trail, E of Kickerville	2nd Cross-Culvert on Loomis Trail, E of Kickerville	1st Cross-Culvert on Loomis Trail, E of Kickerville	Tributary at Kickerville Rd, South of Loomis Trail	Loomis Trail Road, East of Bridge Way
Date	SW42	LT1	SW41	SW40	CA1	LT4
4/13/17	10	78	88	90	68	48
4/20/17	7	490	179	42	290	40
4/27/17	4	4	86	17	500	80
5/3/17	60	470	800	340	682	910
5/11/17	58	50	70	92	220	46
5/18/17	NS	NS	NS	NS	102	74

D- Dry, ST- Stagnant, LF- Low Flow,

Gray box indicated an event where no sample was collected for varying reasons.