

What Resources are Available?

Technical and Financial Assistance for Agricultural Best Management Practices

Whatcom Conservation District
360.526.2381, www.whatcomcd.org

Technical assistance to farmers and land-owners to minimize the impacts of livestock operations on water and soil resources.

On-Site Sewage System Operation & Maintenance Program

Whatcom County Health Department
360.778.6000, www.whatcomcounty.us/826/Environmental-Health

Free homeowner training and certification workshops for septic system evaluation, operation and maintenance.

Septic System Maintenance Rebate Program

Whatcom County Public Works
360.778.6230, www.whatcomcounty.us/2171/Technical-and-Financial-Assistance

Qualifying homeowners are eligible to receive a rebate of up to \$200 for septic system evaluation, pumping or equipment installation.



“Whatcom County’s Pollution Identification and Correction program provides the foundation for our community to build upon to accomplish sound solutions to our water challenges.”

~ Whatcom County Executive
Jack Louws



Whatcom County Public Works
Natural Resources
322 N. Commercial Street, Suite 110
Bellingham, WA 98225

QUESTIONS OR COMMENTS?

CALL

360.778.6230

EMAIL

PICProgram@co.whatcom.wa.us

LEARN MORE

www.whatcomcounty.us/1072/Water-Quality

Whatcom County

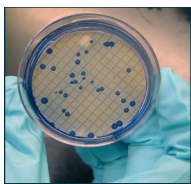
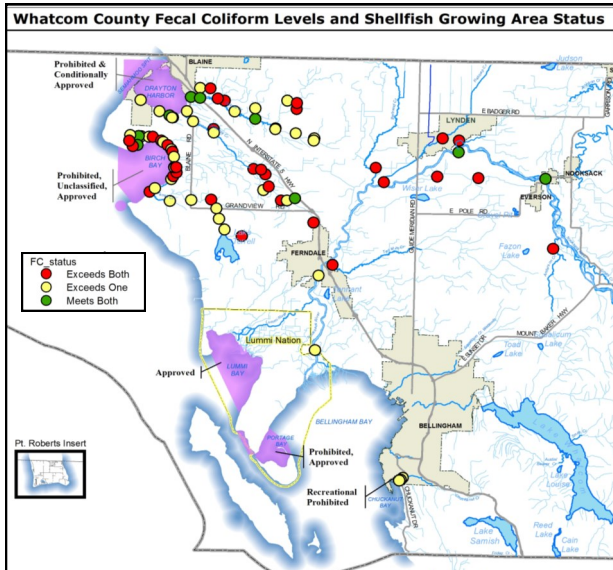
Community Solutions for Clean Water



Pollution Identification and Correction (PIC) Program

How is Water Quality in Whatcom County?

At the end of 2016, **only 30%** of the freshwater sampling sites in Whatcom County were meeting the water quality standards for fecal coliform bacteria.



Fecal coliform bacteria are found in human and animal feces. While most strains do not cause human illness, detection in a creek

is a sign that human or animal wastes, and the harmful pathogens they carry, are polluting the water.

How Does the Pollution Identification and Correction (PIC) Program Work?

Pollution



Water quality is monitored for fecal coliform bacteria at over 90 stations throughout the coastal drainages of Whatcom County.

Results are evaluated annually to identify **focus areas** with the largest bacteria problems.

Correction

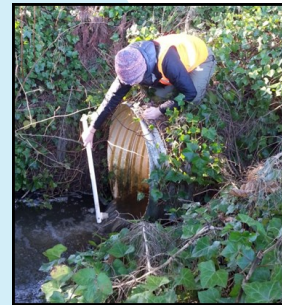


Technical and financial resources are offered to landowners within the **focus areas** to identify and fix bacteria pollution

sources through voluntary efforts and incentives.

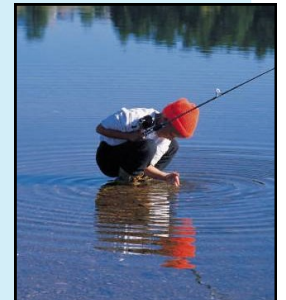
Identification

Focus area samples are collected at a variety of locations along a creek to identify bacteria “hot spots.” These samples help determine areas for water quality improvements and identify bacteria sources.



Clean water is an invaluable resource in our community.

Not only is it essential for human health, but also for the health of fish, shellfish, wildlife, and livestock. It also provides irrigation for crops and a safe place for water-based recreation.



Curious about the water quality in your neighborhood creek?

Visit our website to find out! ➡ www.whatcomcounty.us/1072/Water-Quality