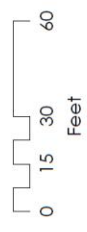


Homeless Strategies Workgroup

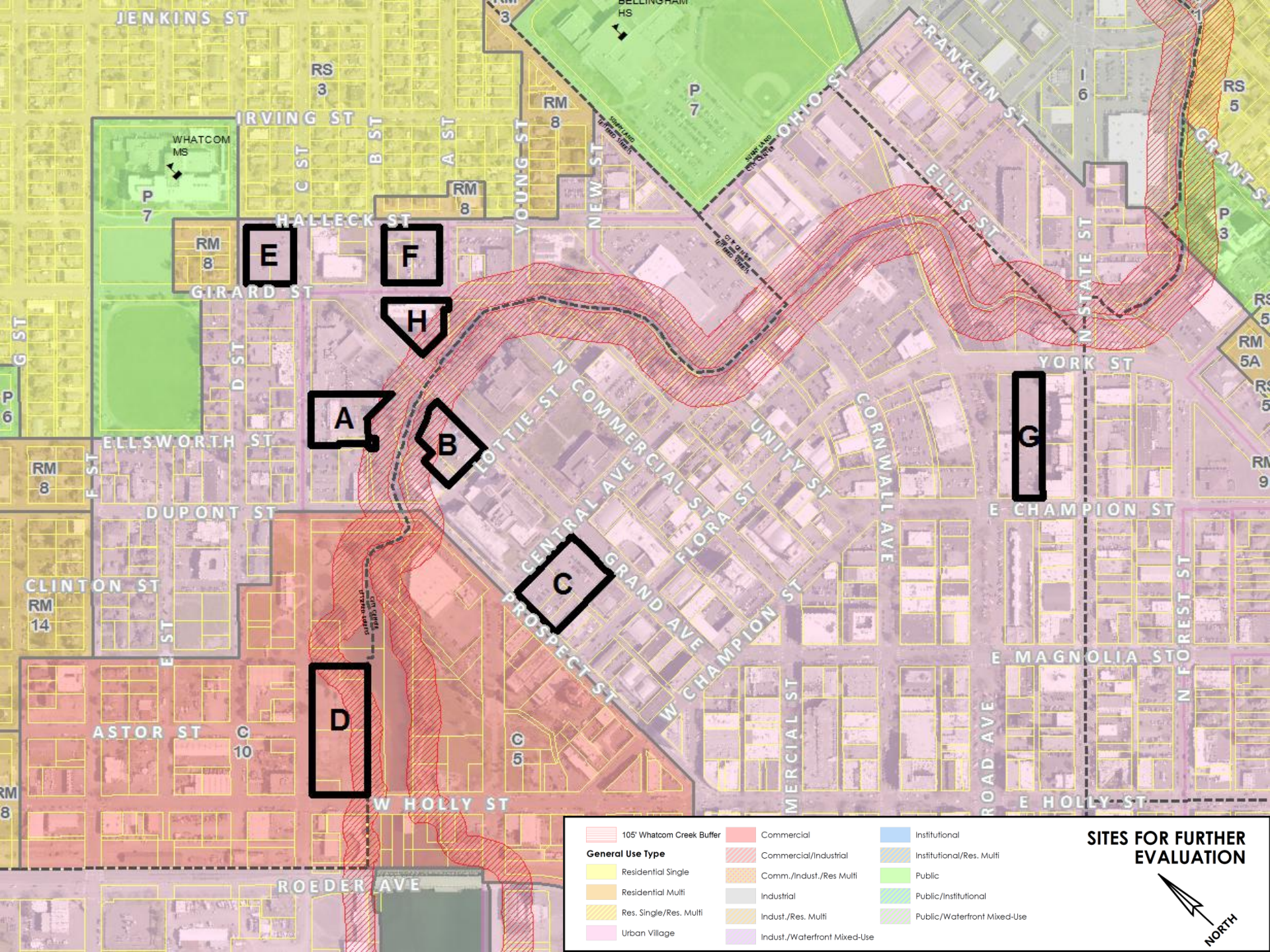
Meeting 4, February 22nd 2018



SITE: County Health Department
SIZE: 0.70 acres (30K sq ft)
 0.46 acres (20K sq ft) outside shoreline buffer
 Existing Bldg = 13,370 sq ft
ZONING: Downtown District Urban Village -
 Commercial Transition Area



1 inch = 24 feet



SITES FOR FURTHER EVALUATION



Ranking Results for Sites A-G are provided below.

Potential Site	Ranking Total
Site A: COB - Bellingham Police Department Site	133* (127)
Site B: Whatcom - 401 Grand Parking Lot	160* (162)
Site C: Whatcom - Court House Parking Lot	152* (150)
Site D: COB - 600 West Holly	162* (157)
Site E: COB - Municipal Court Parking Lot	130* (156)
Site F: COB - Employee Parking Lot	155* (152)
Site G: Whatcom - York, Champion, Railroad, State	165

* Ranking total figures corrected from Jan. 18, 2018 calculation error using meeting audio.