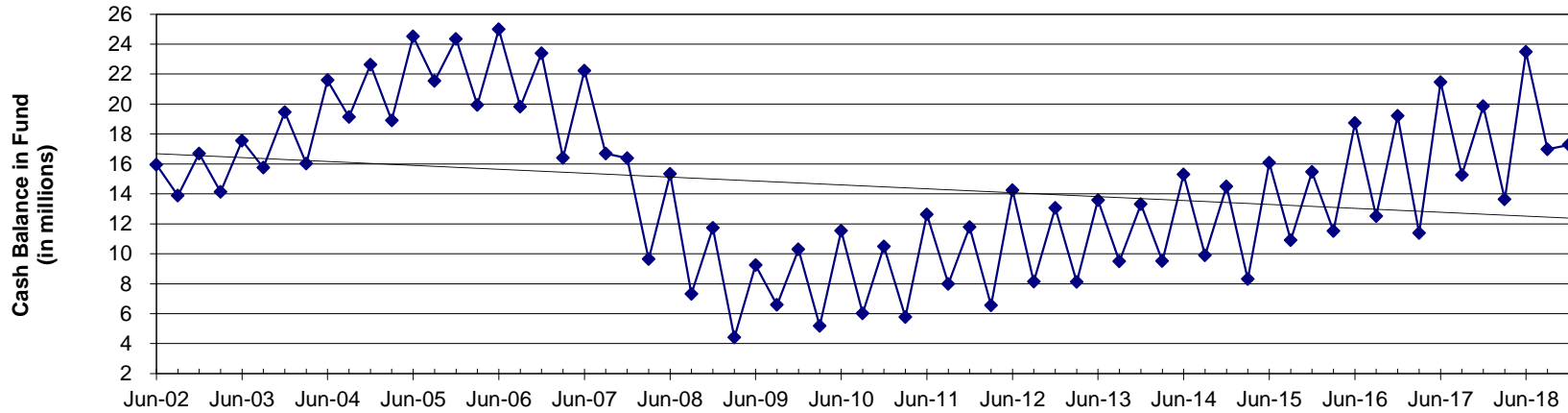


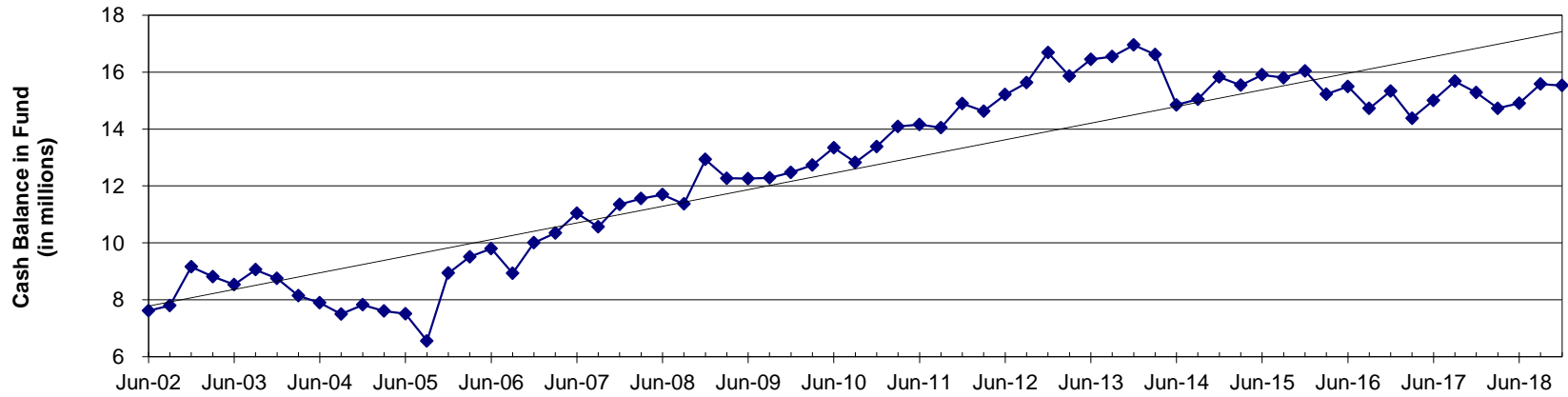
CASH BALANCES BY FUND

As of December 31, 2018

General Fund Fund 1



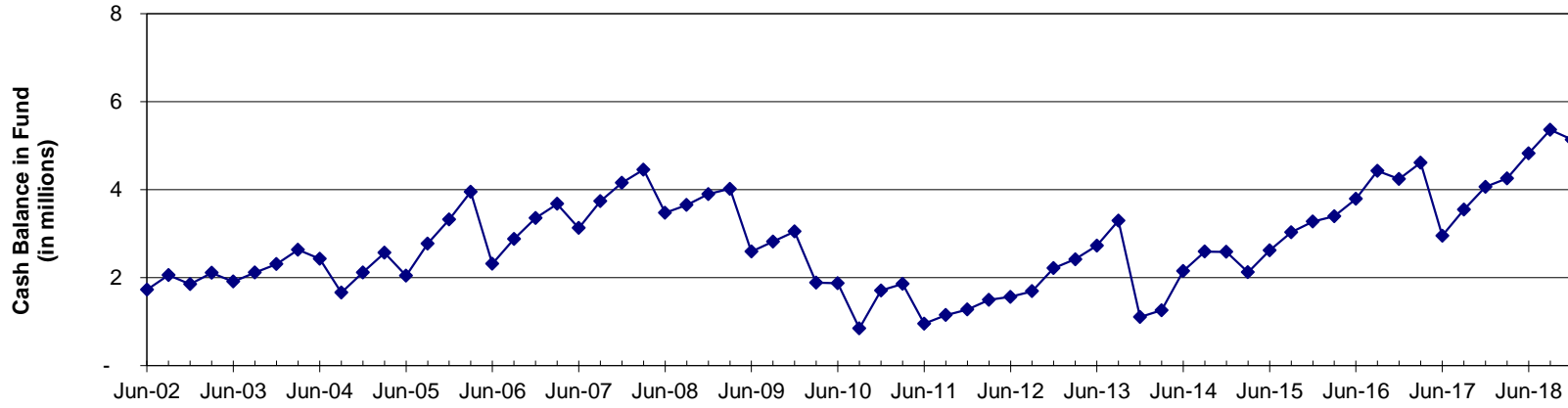
Administrative Services Fund 507



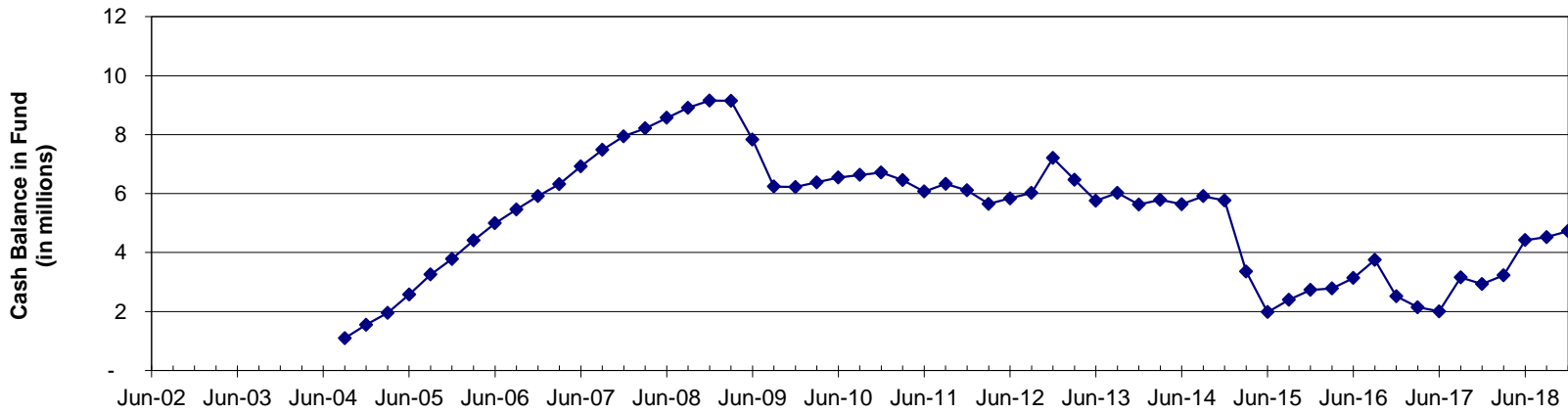
CASH BALANCES BY FUND

As of December 31, 2018

REET I Fund 326



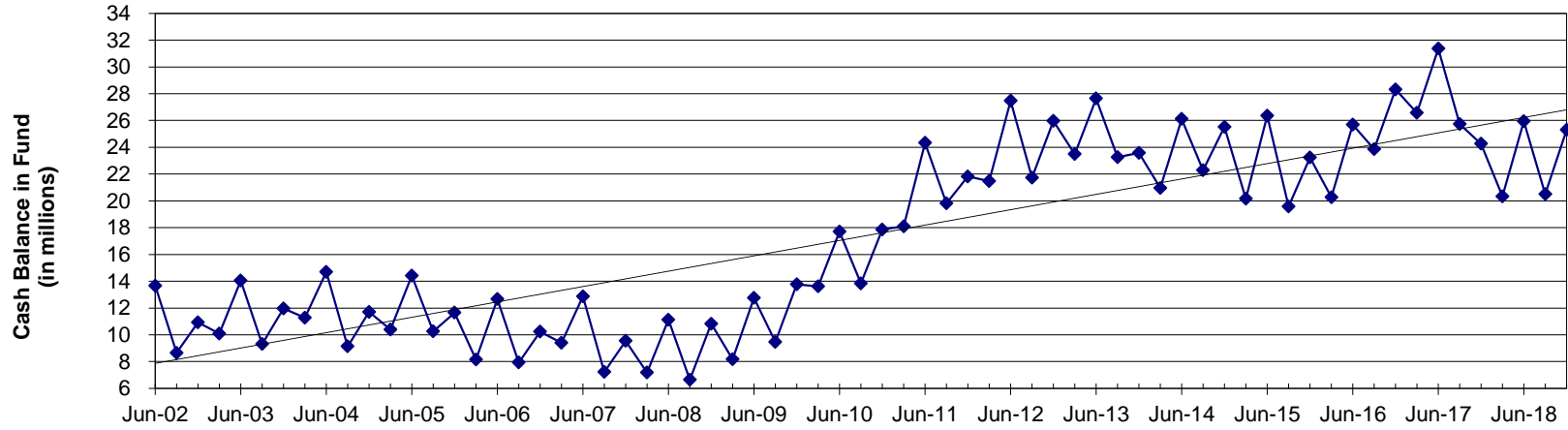
REET II Fund 324



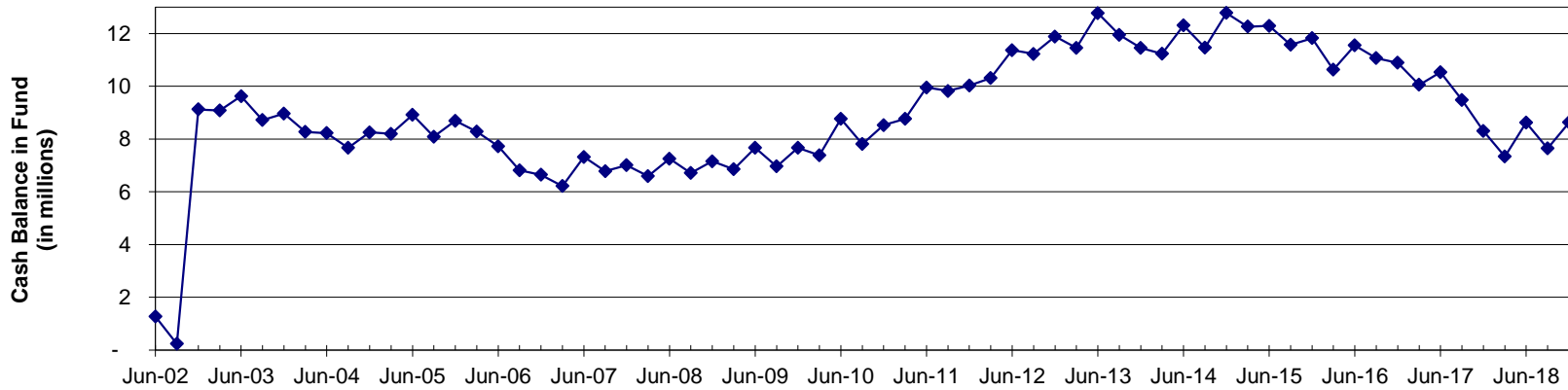
CASH BALANCES BY FUND

As of December 31, 2018

County Road Fund 108



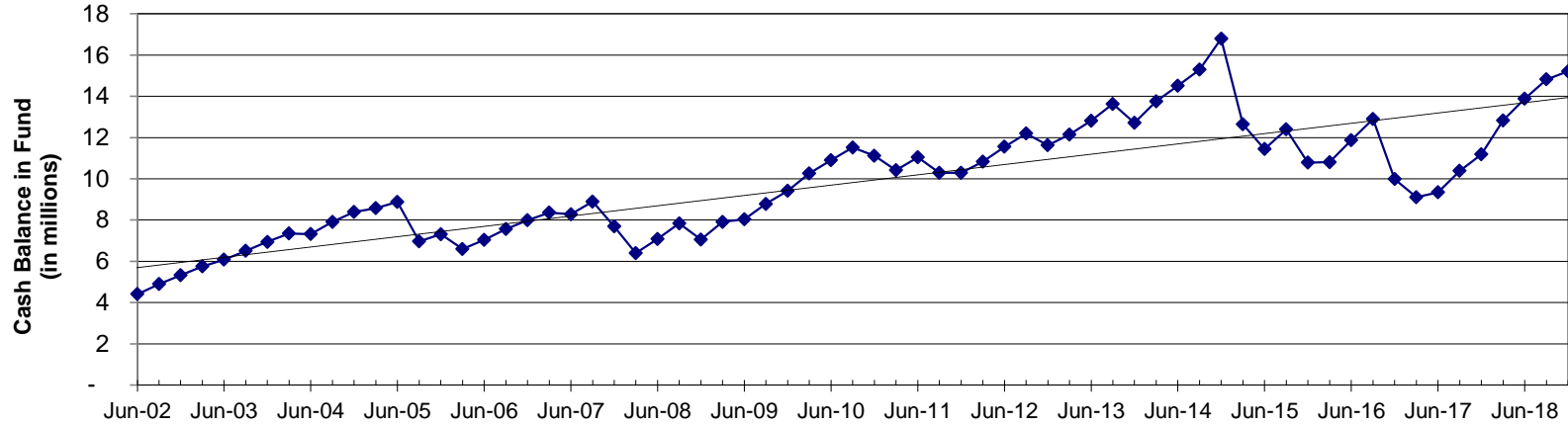
Flood Control Fund 169



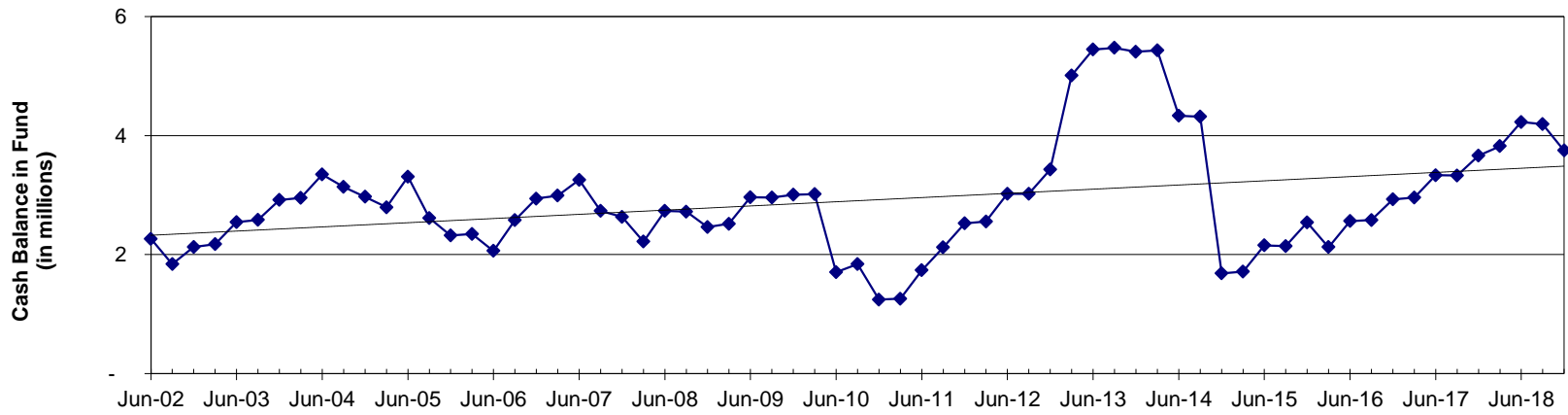
CASH BALANCES BY FUND

As of December 31, 2018

Public Utility Improvement Fund 332



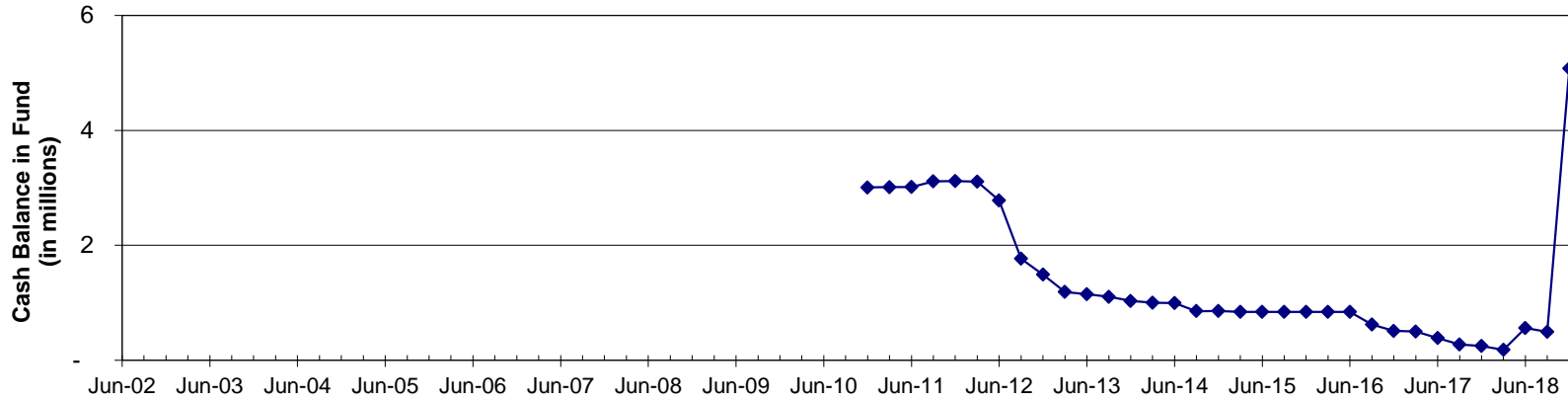
Conservation Futures Fund 175



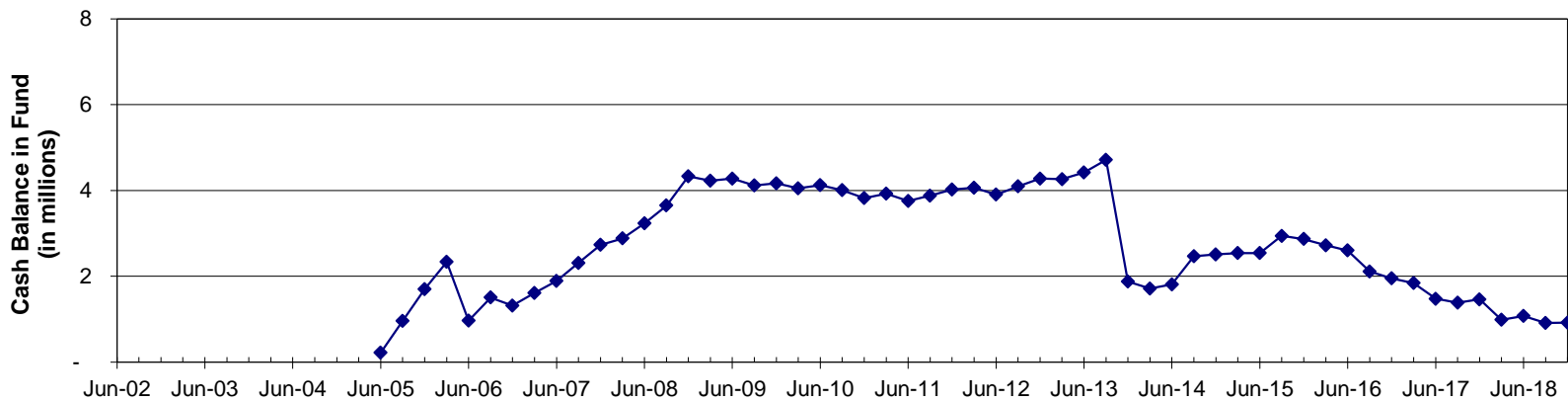
CASH BALANCES BY FUND

As of December 31, 2018

Jail Improvement Fund 337



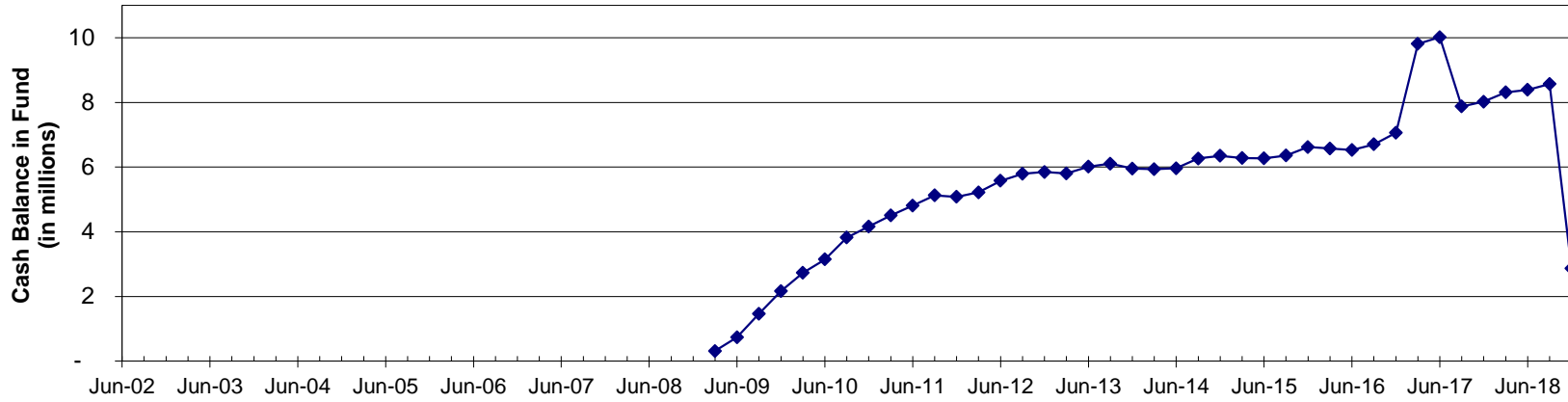
WC Jail Fund 118



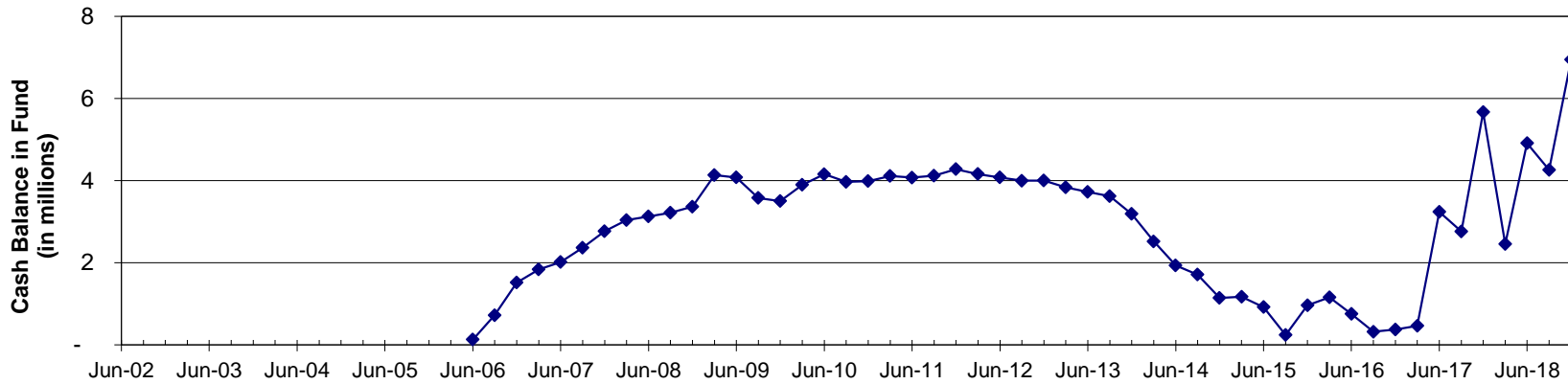
CASH BALANCES BY FUND

As of December 31, 2018

Chemical Dependency/Mental Health Fund 124



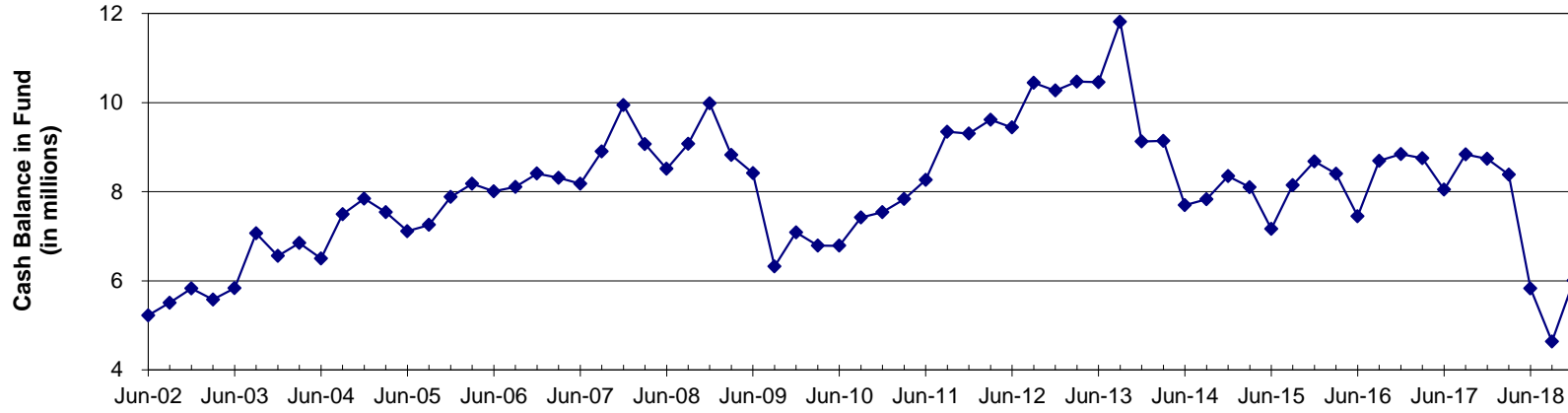
Countywide EMS Fund 130



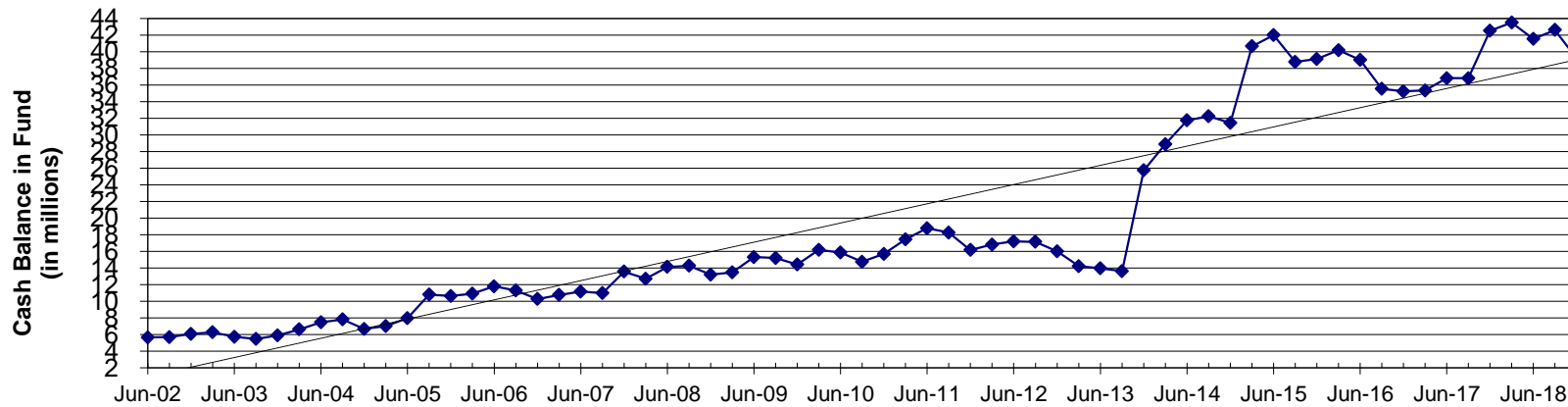
CASH BALANCES BY FUND

As of December 31, 2018

ER&R Fund 501



All Remaining County Funds



CASH BALANCES BY FUND

As of December 31, 2018

FUND	12/31/08	12/31/09	12/31/10	12/31/11	12/31/12	12/31/13	12/31/14	12/31/15	12/31/16	12/31/17	12/31/18	change in balances since 2008
1 Current Expense	11,733,433	10,295,471	10,485,880	11,783,269	13,059,489	13,300,031	14,493,801	15,458,641	19,208,232	19,856,790	17,274,535	5,541,101
108 County Road	10,824,077	13,778,753	17,863,727	21,814,517	25,960,126	23,588,825	25,526,303	23,244,165	28,320,352	24,263,978	25,299,442	14,475,365
118 WC Jail	4,328,638	4,164,118	3,822,333	4,019,314	4,274,941	1,875,470	2,508,338	2,867,003	1,953,452	1,461,314	921,310	(3,407,328)
124 Chem Depend/Mental Hlth			4,158,429	5,079,079	5,846,805	5,952,341	6,351,134	6,620,639	7,060,484	8,024,227	2,862,322	2,862,322
130 Countywide EMS						3,189,719	1,142,054	959,919	367,718	5,666,924	6,946,904	6,946,904
169 Flood Control	7,156,447	7,666,114	8,527,639	10,032,906	11,887,617	11,458,335	12,782,660	11,827,277	10,894,908	8,306,842	8,629,520	1,473,073
175 Conserv Futures	2,463,748	3,007,202	1,242,671	2,526,276	3,430,008	5,407,214	1,686,467	2,540,038	2,926,909	3,661,867	3,749,599	1,285,851
324 REET II	9,153,226	6,220,627	6,713,238	6,112,428	7,206,479	5,631,892	5,765,549	2,735,409	2,514,365	2,927,096	4,729,618	(4,423,608)
326 REET I	3,899,274	3,046,494	1,704,602	1,275,192	2,215,462	1,105,137	2,583,547	3,271,661	4,242,668	4,063,568	5,135,121	1,235,848
332 PuBMic Util Imp	7,053,146	9,416,489	11,118,023	10,288,162	11,628,748	12,707,743	16,788,382	10,784,956	9,988,002	11,188,451	15,214,174	8,161,028
337 Jail Imp			3,006,599	3,115,475	1,490,919	1,031,461	854,297	838,432	509,620	248,262	5,075,752	5,075,752
501 ER&R	9,981,786	7,085,386	7,540,869	9,308,020	10,271,843	9,131,288	8,350,076	8,683,278	8,845,018	8,736,796	6,005,558	(3,976,228)
507 Admin Services	12,928,342	12,478,867	13,382,323	14,898,266	16,681,983	16,948,274	15,825,434	16,035,991	15,332,291	15,282,358	15,526,661	2,598,319
Other County Funds	13,188,103	14,432,135	15,689,479	16,161,950	15,985,656	25,741,348	31,429,345	39,194,511	35,548,594	42,520,155	39,167,465	25,979,361
ALL FUNDS TOTAL	92,710,222	91,591,658	105,255,813	116,414,853	129,940,076	137,069,077	146,087,386	145,061,918	147,712,616	156,208,630	156,537,980	63,827,758
Other County Funds												
109 Election Reserve	222,140	152,938	82,605	74,524	216,850	115,862	350,343	365,445	533,157	377,268	343,847	121,706.48
114 Veteran's Relief	621,249	750,701	881,928	859,090	788,689	683,719	633,029	604,075	624,706	691,664	717,744	96,495.17
115 Tax Refund	63	64	71	81	244	244	244	244	244	244	244	180.73
116 Treasurer's O&M	198,581	248,176	305,108	305,615	321,726	359,141	396,940	457,288	510,987	588,767	627,196	428,614.41
121 Low Income Hsg	353,344	379,284	336,641	116,535	168,783	115,700	110,117	108,570	161,145	164,402	183,852	(169,491.74)
122 Homeless Hsg	1,080,947	1,254,964	1,059,066	680,479	807,949	487,821	435,039	856,203	556,647	458,056	423,206	(657,740.30)
123 Stormwater		845,307	254,862	552,488	286,478	513,018	256,328	725,039	705,154	410,262	377,224	377,223.95
126 Parks Special Revenue							1,648,956	1,666,945	1,684,535	1,675,248	1,659,786	1,659,786.11
135 Trial Court Imp	15,892	63,338	73,936	115,091	148,619	157,029	191,647	188,783	203,323	211,518	211,518	195,625.46
137 LEOFF I Healthcare	3,500,000	2,070,909	1,011,576	674,473	393,073	188,278	188,278	188,278	188,278	188,278	188,278	(3,311,721.84)
140 Solid Waste	1,335,832	1,316,183	1,270,666	1,416,223	1,431,491	1,663,037	1,983,234	2,165,320	2,464,713	2,410,753	2,902,971	1,567,139.00
141 Convention Center	692,619	822,779	1,021,566	1,161,150	1,127,404	1,213,291	1,312,124	1,375,522	1,400,382	1,498,582	1,702,143	1,009,523.85
142 Victim Witness Assist	90,778	62,418	58,129	59,816	26,684	22,821	15,165	15,360	15,805	25,558	103,418	12,640.79
154-159 RID #1-7	53,246	50,155	46,698	44,147	42,243	36,574	24,800	30,331	19,406	13,192	25,065	(28,181.07)
165 WC Drug Fund	762,720	577,842	212,266	63,600	317,634	150,750	147,422	757,702	453,935	799,953	578,670	(184,049.74)
166 Auditor's O&M	508,376	617,128	533,193	512,610	487,509	399,556	379,134	412,688	403,749	419,118	445,235	(63,140.64)
167 Emergency Mgmt	76,766	88,657	2,460	24,882	27,803	131,634	116,953	134,355	194,359	243,817	133,545	56,779.20
170 Pt Roberts Fuel Tax	311,786	347,660	402,598	481,895	580,832	656,883	755,091	836,243	905,108	968,877	1,050,188	738,401.69
212-245 Debt Service	230,059	221,412	167,936	19,007	3,127	2,166	1,564	607	612	1,013	1,413	(228,645.84)
330 County Parks Imp	127,444	130,599	1,653,774	1,675,271	1,684,331	165,239	86,318	963	1,246	1,265	-	(127,443.56)
331 Civic Center BMdg	32,211	32,211	32,211	1,436,247	1,556,902	2,534,006	2,529,037	2,480,719	2,474,543	2,474,543	2,435,831	2,403,619.78
334 E Whatcom Reg Res Ctr	89,892	289,063	439,244	59,615	105,208	76,778	112,891	146,546	330,910	316,725	426,738	336,845.50
338 Lummi Nation Lease Fund						2,000,000	2,000,000	2,000,000	1,286,683	2,551,364	2,335,240	2,335,240.10
339 Birch Bay & Pedestrian						665,374	409,095	495,208	319,490	5,067,710	4,603,809	4,603,808.51
342 Potter Rd/S Fork Brg						1,654,796	145,166	600,582	778,406	1,157,316	-	-
344 Sheriff Records Mgmt						708,291	279,670	268,615	193,503	184,810	167,618	167,617.70
345 New Jail Project Fund							1,376,307	1,776,328	2,726,414	2,693,572	2,688,294	2,688,293.64
348 State St Building Acq						5,042,682	2,370,923	2,690,370	2,653,235	2,597,403	2,437,931	2,437,931.05
351 Telecomm System Replace							1,971,314	1,022,007	695,004	670,533	-	-
355 2015 County Rd Safety Prog								801,560	483,343	20,704	-	-
357 2015 CH FireAlrm Juve Rf Imp								253,079	138,207	877,104	638,466	638,466.02
358 2015 Girard St BMdg Imp								467,772	441,541	441,541	431,673	431,673.06
359 CH BMdg Envelope Project								250,000	230,424	2,601,454	2,328,317	2,328,317.23
361 2015 Silver Lk Park Imp								843,198	798,962	764,122	35,985	35,984.99
362 2015 Lighthse Marine Pk Imp								250,000	202,040	146,389	71,187	71,187.26
363 2015 South Fork Park Imp								479,000	197,978	78,766	38,351	38,351.12
364 Academy Rd StrmWtr Imp								184,103	159,986	1	1	0.95
365 AgtHghts Estate/By StrmWtr								588,971	700,812	545,558	426,894	426,894.08
367 Cedar Hills/Eclld StrmWtr								507,026	213,850	703,174	-	-
368 CrimJus Intgrtd Case Mgmt Sys								600,000	594,898	555,876	552,646	552,646.67
369 LandRec/PermMgmt Sys								1,166,126	1,056,200	1,867,597	1,302,141	1,302,141.20
402 WC Investment Pool	238,615	240,242	291,530	220,216	115,841	122,620	74,418	71,760	91,715	117,532	163,935	(74,679.93)
444 Ferry System	656,184	424,343	587,911	1,235,358	1,425,704	1,614,735	1,960,429	971,256	2,279,567	1,147,674	2,323,349	1,667,165.46
16921-16925 Fld Sub-Zones	913,459	1,662,862	2,457,527	2,668,140	3,291,870	3,225,274	3,328,725	3,310,294	3,481,230	3,773,634	4,043,282	3,129,822.44
Other County Funds Total	13,188,103	14,432,135	15,689,479	16,161,950	15,985,656	25,741,348	31,429,345	39,134,705	35,221,509	42,520,155	39,167,465	27,015,028