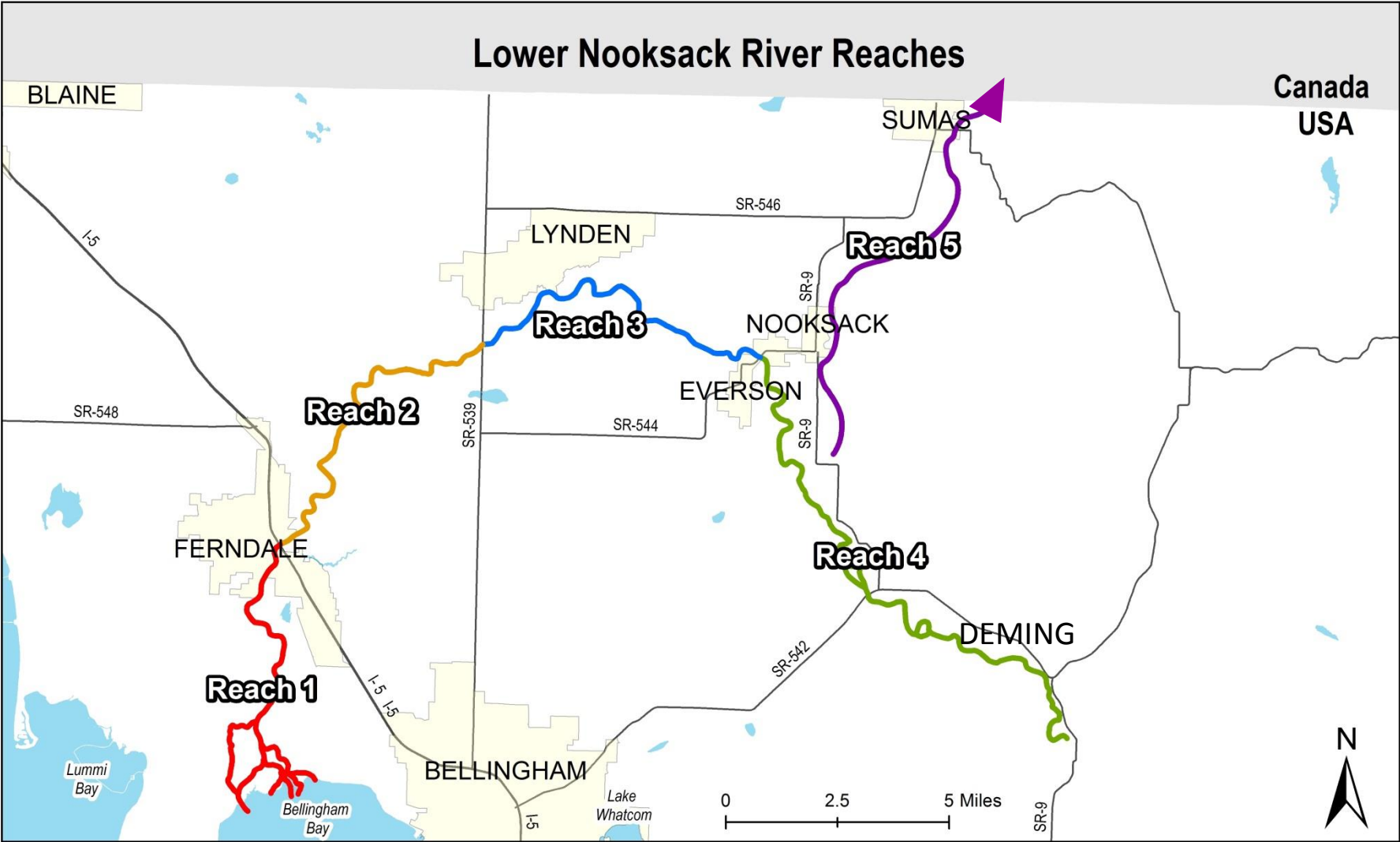


Developing Floodplain Management Solutions at the Reach Scale

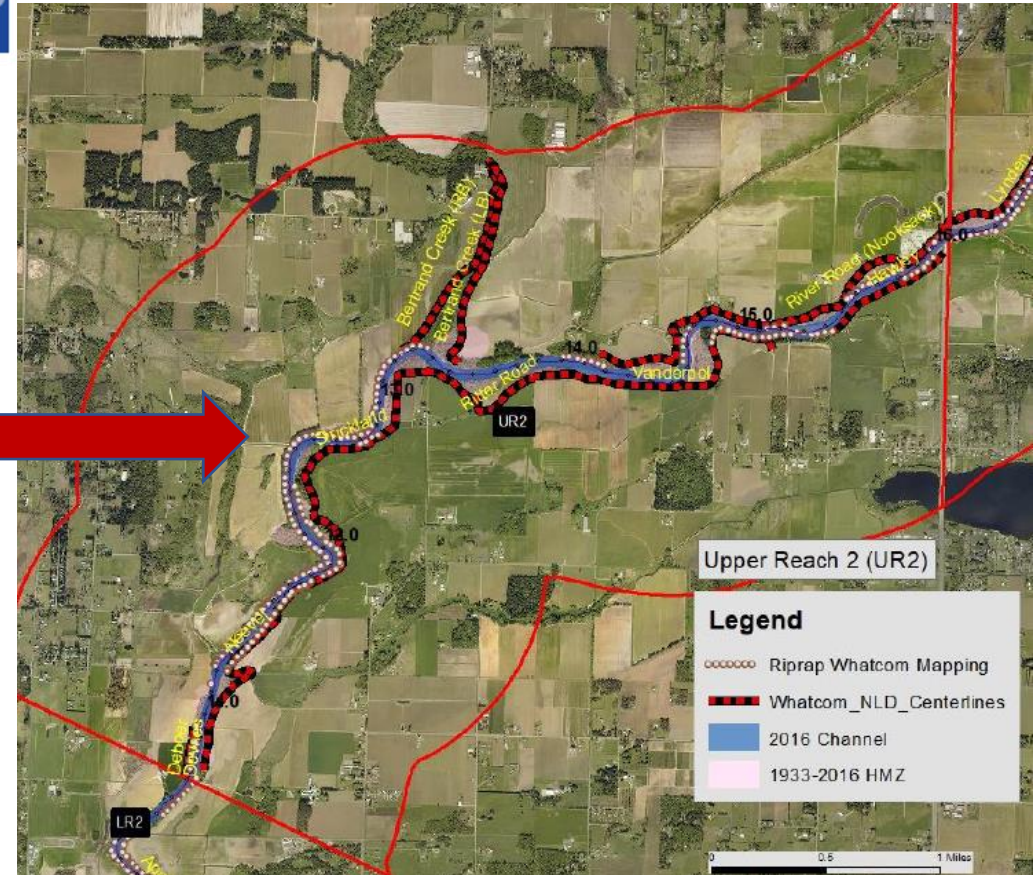


Reach Team Work

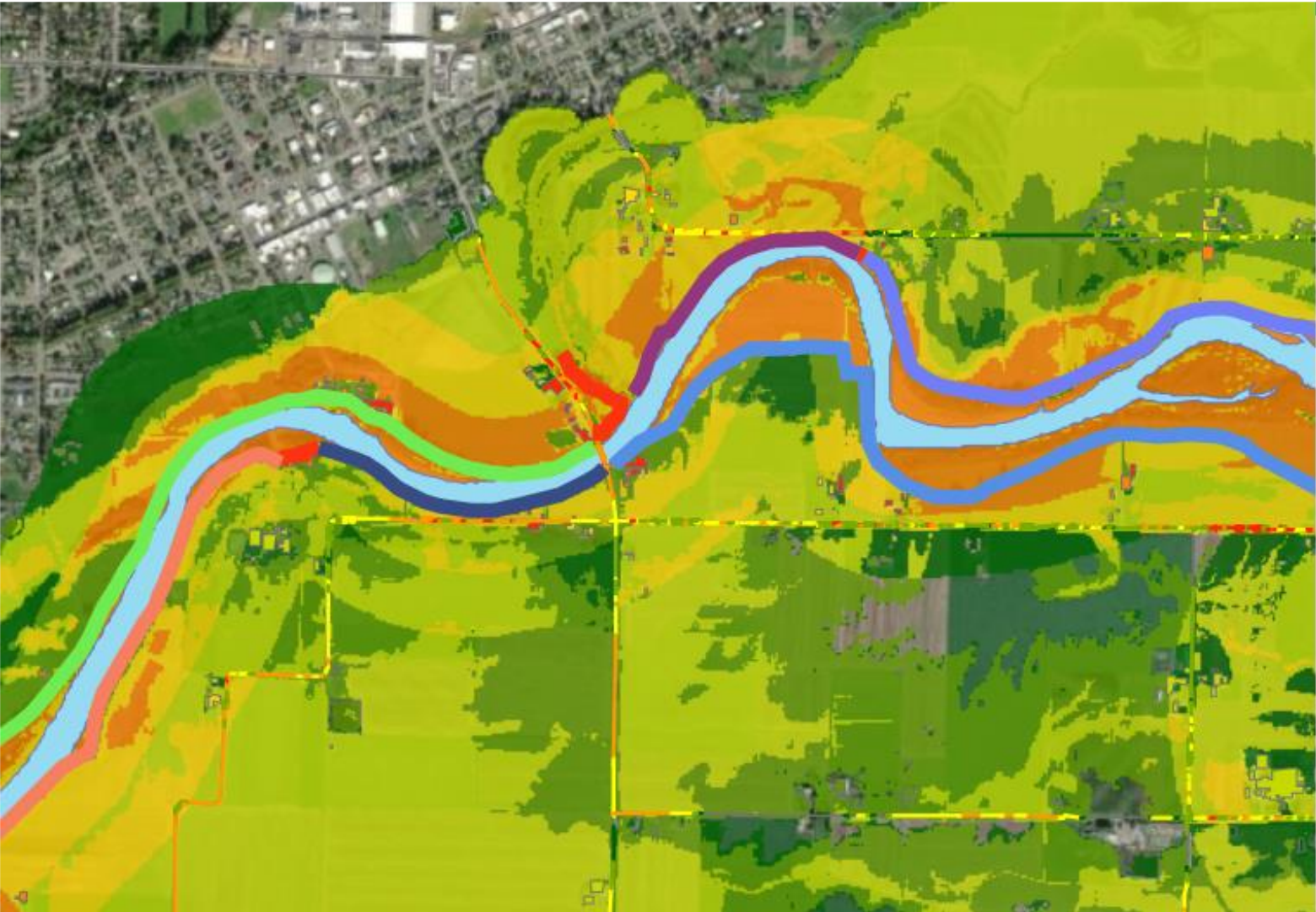
FLIP Planning Process



- Integrate needs/problems
- Integrate reach strategies
- Develop SMART objectives
- Identify opportunities
- Develop project ideas
- Evaluate alternatives
- Establish reach priorities



Integration example: flood and erosion risk “heat mapping”



Combined Flooding and Erosion Risk

- 2 - 4
- 5 - 8
- 9 - 12
- 13 - 16
- 17 - 20
- 21 - 24

Story Mapping as a Robust Way to Share Information

What are we doing?

Whatcom County is working to improve conditions for farms, fish, and flood risk in the Lower Nooksack River Floodplain. [Additional information on study area here and maybe a simpler map of the whole area with landmarks]



Integrated floodplain management is a form of planning and management that seeks collaborative, shared solutions for our floodplain areas. Instead of competing for limited resources, various interests (for example, flood risk reduction, agricultural preservation, and habitat restoration) can develop solutions that create benefit for all parties and that can be jointly pursued.

Integrated management can lead to multiple-benefit projects that meet the needs of more than one floodplain value in one place. Integrated solutions make better use of limited funding and lead to wiser capital investments.

Why are we doing it?

Floodplains are a limited geographic area where our values can sometimes collide. There are three key interests that are important to integrate.



FISH

Floodplains provide key habitat for salmon and represent a critical location for habitat restoration. To learn more about fish habitat in the Lower Nooksack River, [click here](#).



FARMS

Floodplains provide rich, fertile soil for the agricultural industry. [We should have Rayna make a Farms icon if we continue with this format in the same style as the others. This is a placeholder]. To learn more about farms in the Lower Nooksack River, [click here](#).



FLOODS

Floodplains include important sites for flood risk reduction projects that can make our communities safer. To learn more about flooding in the Lower Nooksack River, [click here](#).

Some of the goals of this project include reducing the vulnerability to flood risks of the residents, protect public infrastructure, minimize disruptions to the regional economy as a result of flooding, and protect habitat and other community values.

Story Mapping Allows Combination of Narrative and Interactive Maps and Images, and External Links



Reach 2 Levee Breach



This photo was taken east (upstream), showing the overbank flooded area to the north of the Nooksack River (river right bank) in 2009. The river's edge is visible in the lower right (trees along bank curve). In the background is Lynden and Sumas Mountain.

