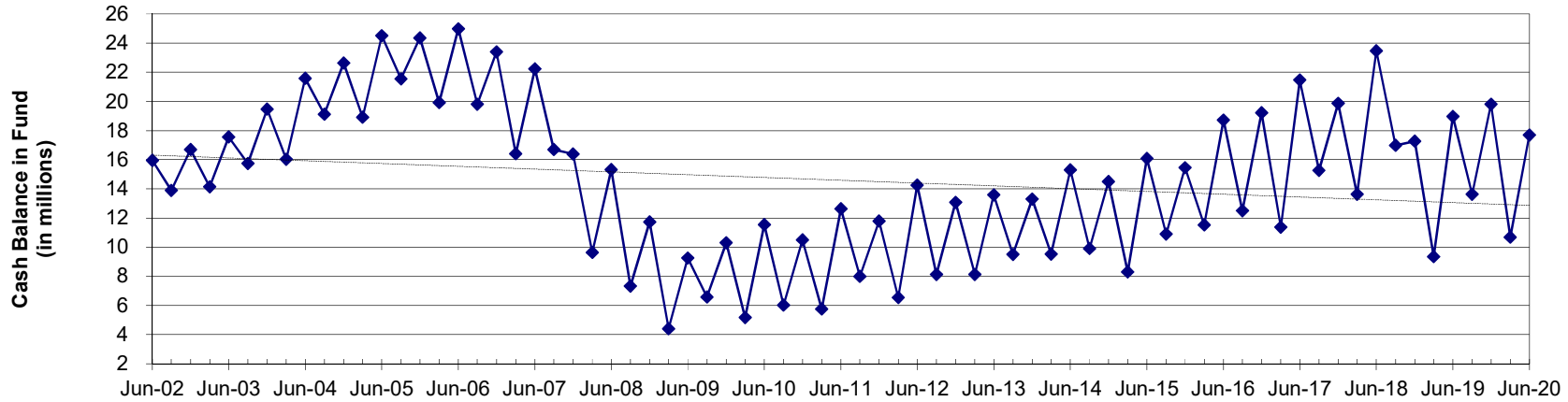


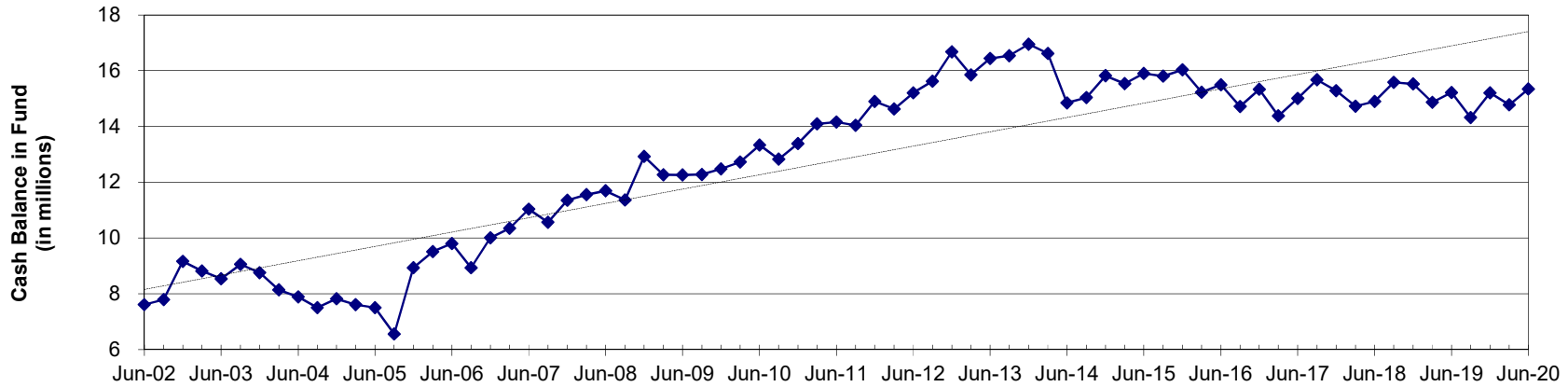
CASH BALANCES BY FUND

As of June 30, 2020

General Fund Fund 1



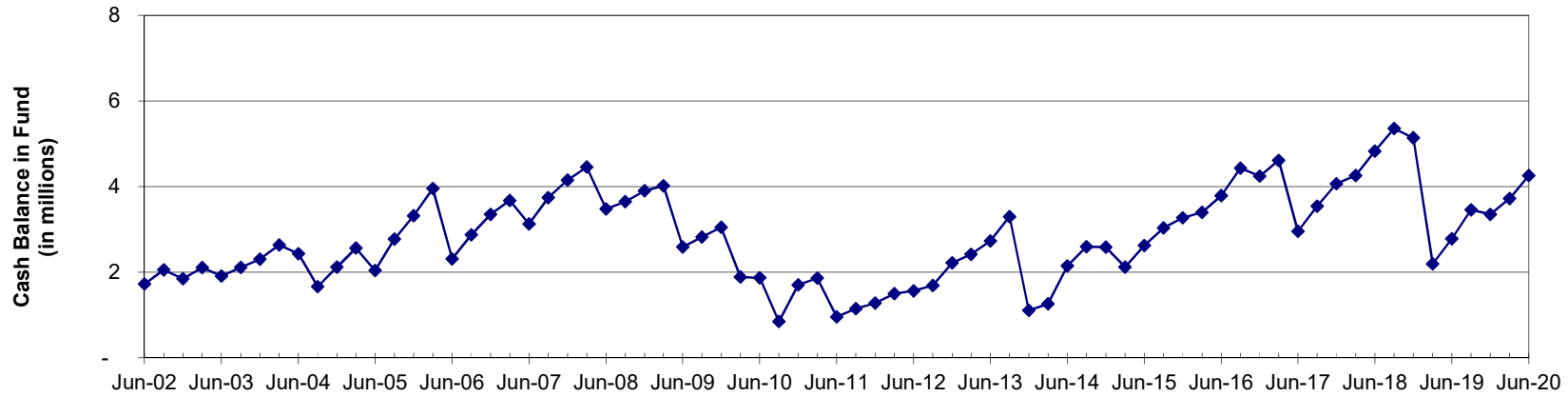
Administrative Services Fund 507



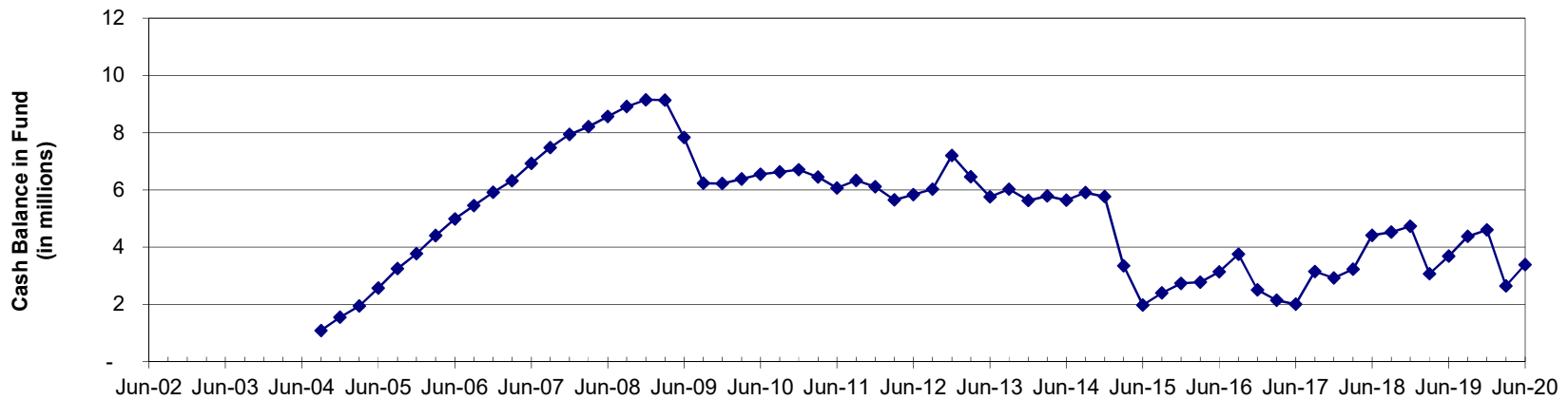
CASH BALANCES BY FUND

As of June 30, 2020

REET I Fund 326



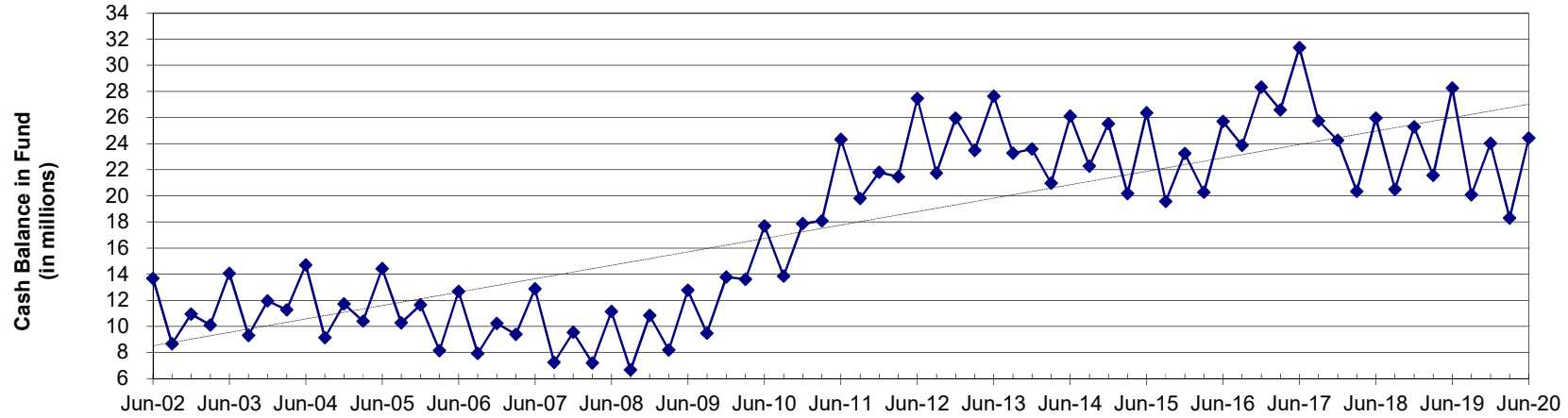
REET II Fund 324



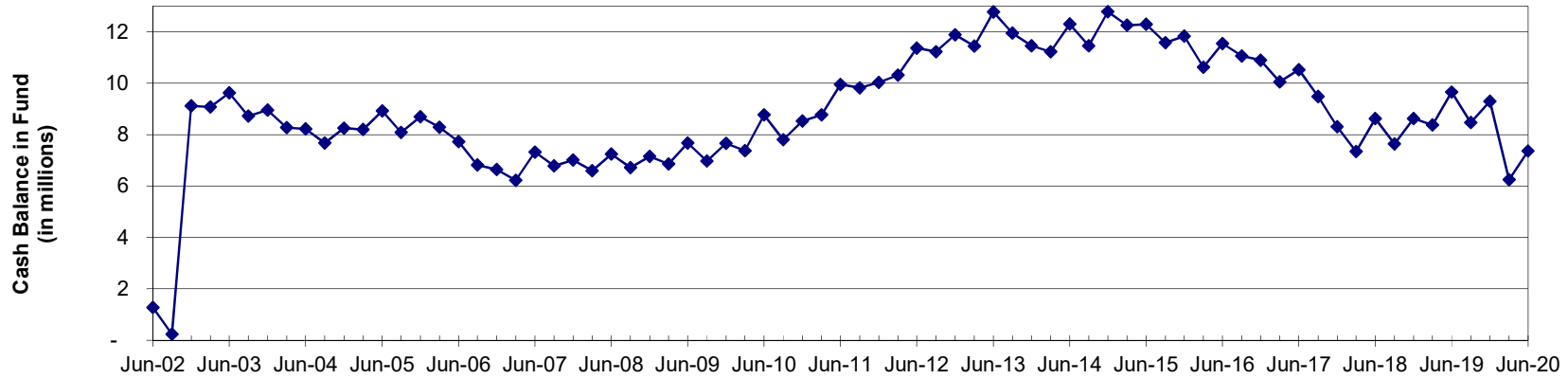
CASH BALANCES BY FUND

As of June 30, 2020

County Road Fund 108



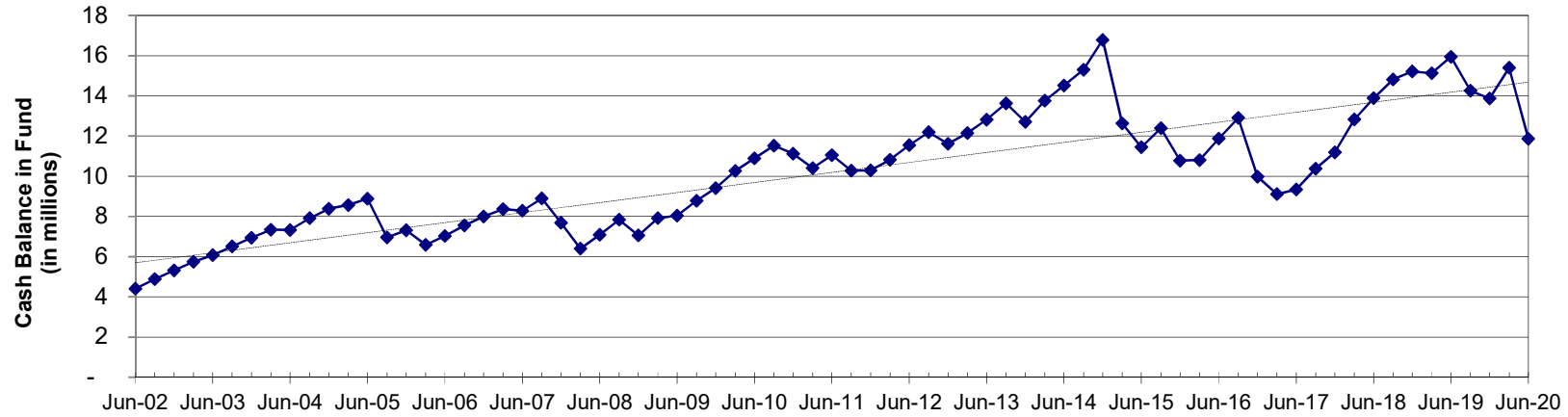
Flood Control Fund 169



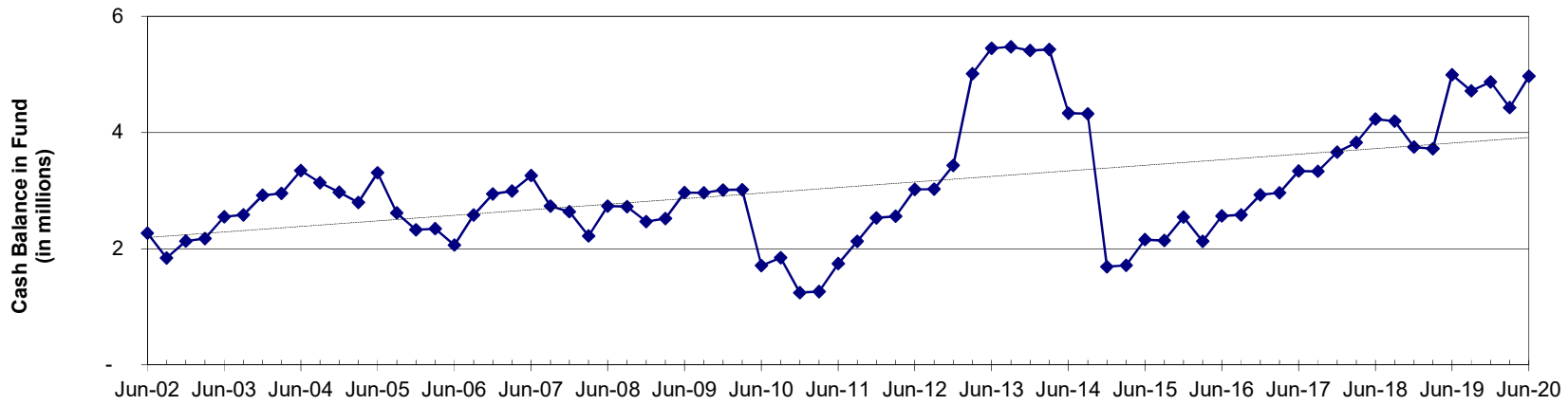
CASH BALANCES BY FUND

As of June 30, 2020

Public Utility Improvement Fund 332



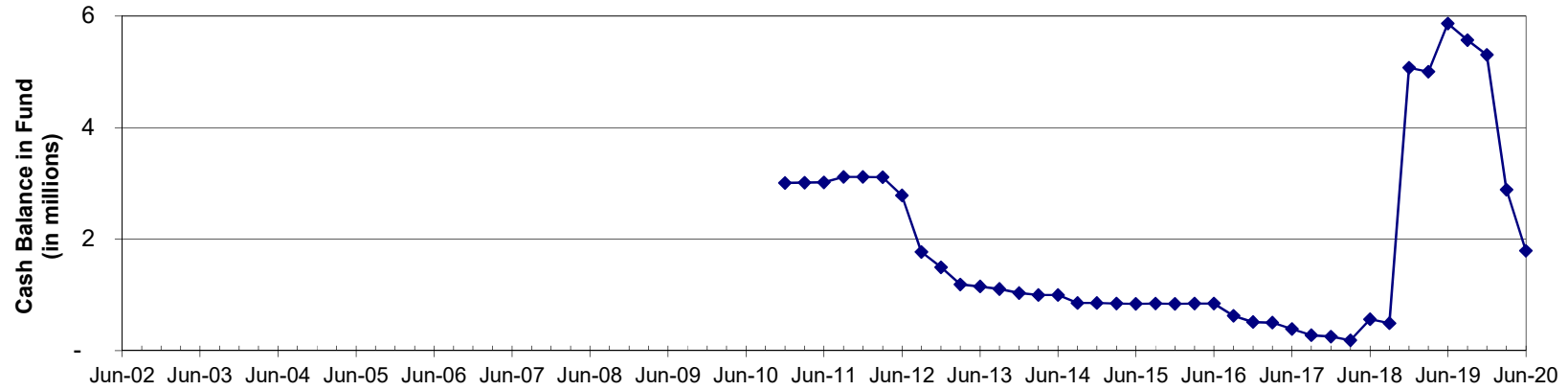
Conservation Futures Fund 175



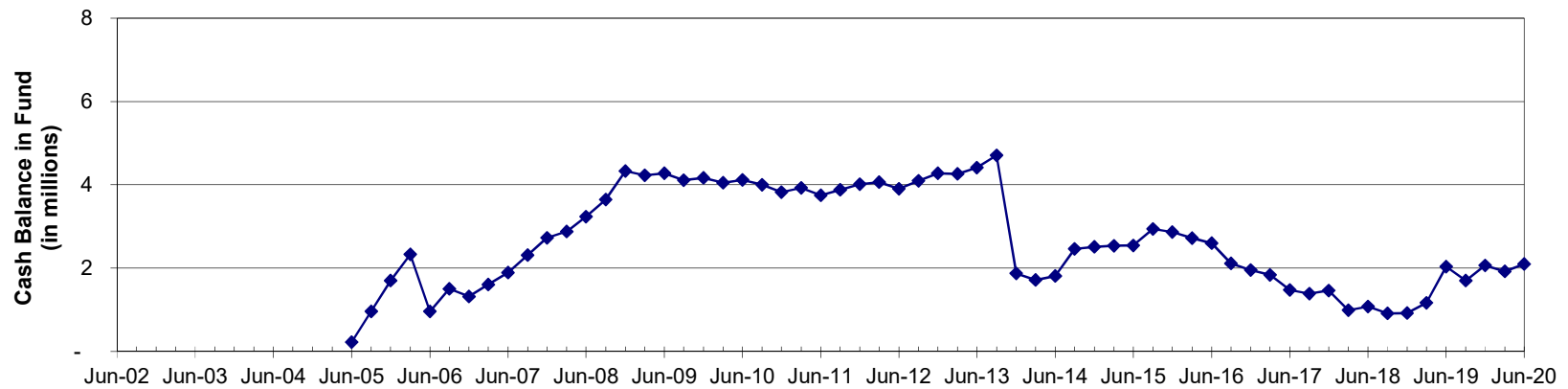
CASH BALANCES BY FUND

As of June 30, 2020

Jail Improvement Fund 337



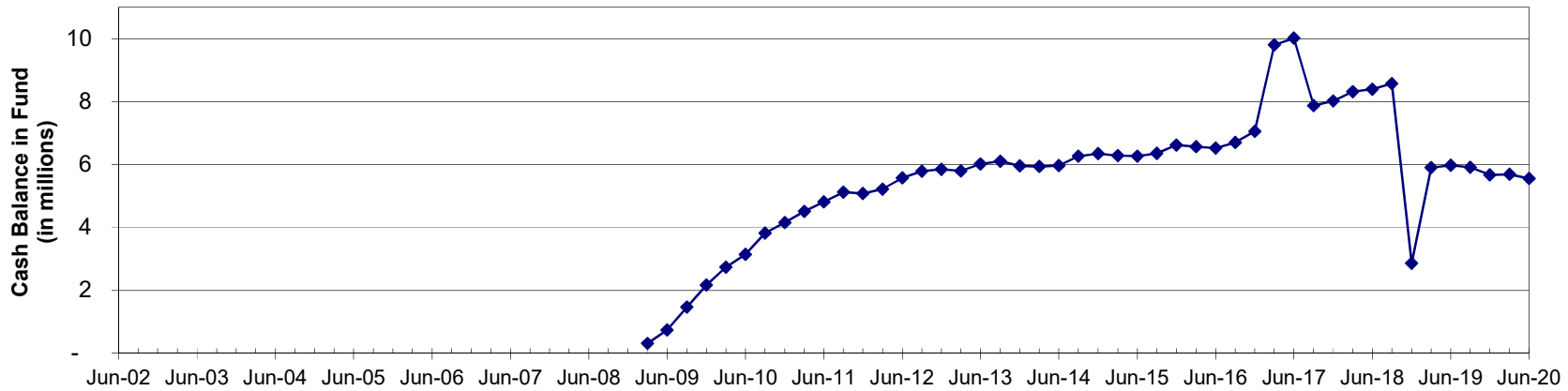
WC Jail Fund 118



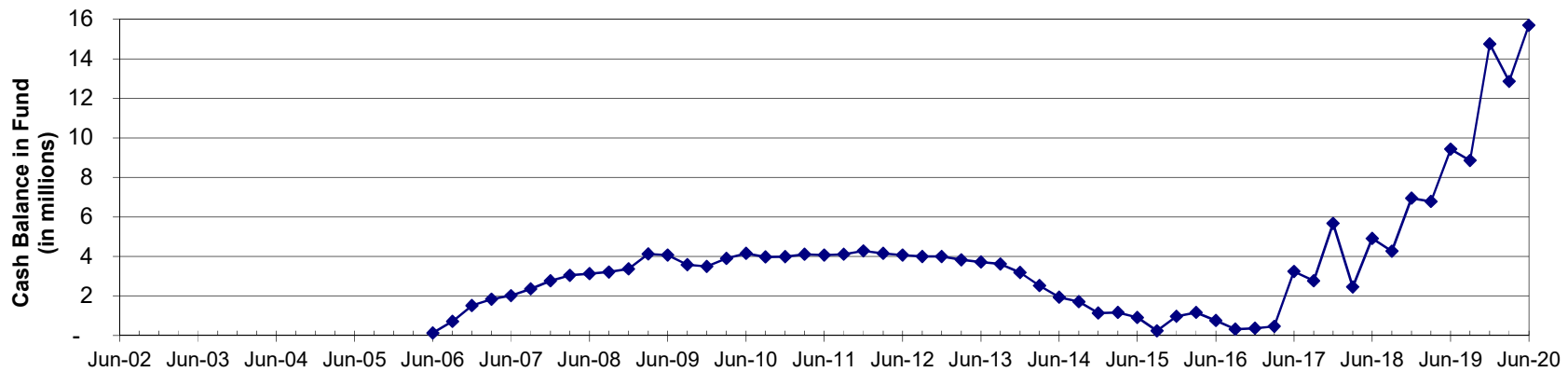
CASH BALANCES BY FUND

As of June 30, 2020

Chemical Dependency/Mental Health Fund 124



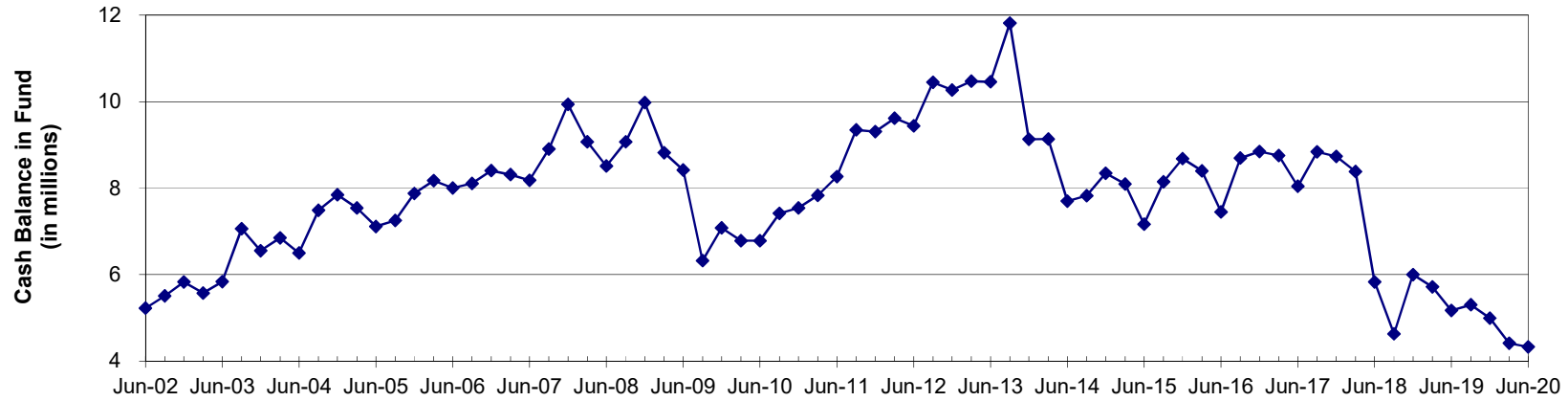
Countywide EMS Fund 130



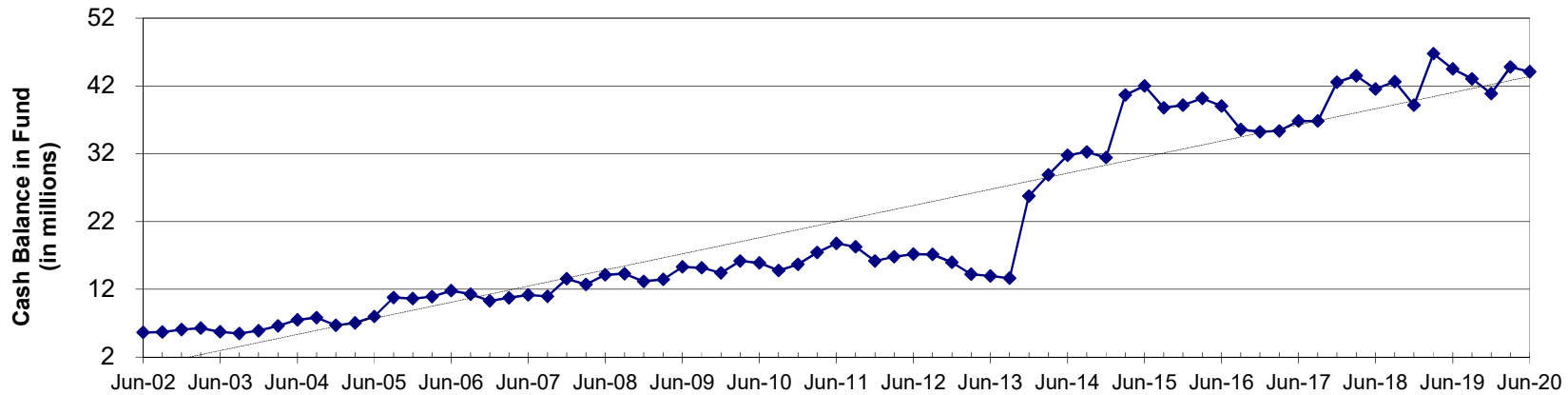
CASH BALANCES BY FUND

As of June 30, 2020

ER&R Fund 501



All Remaining County Funds



CASH BALANCES BY FUND

As of June 30, 2020

FUND	12/31/08	12/31/09	12/31/10	12/31/11	12/31/12	12/31/13	12/31/14	12/31/15	12/31/16	12/31/17	12/31/18	12/31/19	3/31/20	6/30/20	change in balances since 2008
1 Current Expense	11,733,433	10,295,471	10,485,880	11,783,269	13,059,489	13,300,031	14,493,801	15,458,641	19,208,232	19,856,790	17,274,535	19,804,333	10,689,530	19,804,333	(1,043,904)
108 County Road	10,824,077	13,778,753	17,863,727	21,814,517	25,960,126	23,588,825	25,526,303	23,244,165	28,320,352	24,263,978	25,299,442	24,019,062	18,301,763	24,019,062	7,477,685
118 WC Jail	4,328,638	4,164,118	3,822,333	4,019,314	4,274,941	1,875,470	2,508,338	2,867,003	1,953,452	1,461,314	921,310	2,062,821	1,921,513	2,062,821	(2,407,125)
124 Chem Depend/Mental Hlth			4,158,429	5,079,079	5,846,805	5,952,341	6,351,134	6,620,639	7,060,484	8,024,227	2,862,322	5,669,192	5,694,040	5,669,192	5,694,040
130 Countywide EMS						3,189,719	1,142,054	959,919	367,718	5,666,924	6,946,904	14,751,649	12,866,104	14,751,649	12,866,104
169 Flood Control	7,156,447	7,666,114	8,527,639	10,032,906	11,887,617	11,458,335	12,782,660	11,827,277	10,894,908	8,306,842	8,629,520	9,302,335	6,244,782	9,302,335	(911,665)
175 Conserv Futures	2,463,748	3,007,202	1,242,671	2,526,276	3,430,008	5,407,214	1,686,467	2,540,038	2,926,909	3,661,867	3,749,599	4,869,049	4,426,315	4,869,049	1,962,567
324 REET II	9,153,226	6,220,627	6,713,238	6,112,428	7,206,479	5,631,892	5,765,549	2,735,409	2,514,365	2,927,096	4,729,618	4,603,846	2,646,868	4,603,846	(6,506,358)
326 REET I	3,899,274	3,046,494	1,704,602	1,275,192	2,215,462	1,105,137	2,583,547	3,271,661	4,242,668	4,063,568	5,135,121	3,351,252	3,720,096	3,351,252	(179,178)
332 PuBMic Util Imp	7,053,146	9,416,489	11,118,023	10,288,162	11,628,748	12,707,743	16,788,382	10,784,956	9,988,002	11,188,451	15,214,174	13,878,946	15,397,262	13,878,946	8,344,115
337 Jail Imp			3,006,599	3,115,475	1,490,919	1,031,461	854,297	838,432	509,620	248,262	5,075,752	5,305,272	2,884,170	5,305,272	2,884,170
501 ER&R	9,981,786	7,085,386	7,540,869	9,308,020	10,271,843	9,131,288	8,350,076	8,683,278	8,845,018	8,736,796	6,005,568	4,995,855	4,415,347	4,995,855	(5,566,439)
507 Admin Services	12,928,242	12,478,867	13,382,323	14,898,266	16,681,983	16,948,274	15,825,434	16,035,991	15,332,291	15,282,358	15,209,728	14,780,076	15,209,728	15,209,728	1,851,734
Other County Funds	13,188,103	14,432,135	15,689,479	16,161,950	15,985,656	25,741,348	31,429,345	39,194,511	35,548,594	42,520,155	39,167,465	40,856,522	44,779,302	40,856,522	31,591,199
ALL FUNDS TOTAL	92,710,222	91,591,658	105,255,813	116,414,853	129,940,076	137,069,077	146,087,386	145,061,918	147,712,616	156,208,630	156,537,980	168,679,862	148,767,168	168,679,862	56,056,946

Other County Funds															
109 Election Reserve	222,140	152,938	82,605	74,524	216,850	115,862	350,343	365,445	533,157	377,268	343,847	457,380	626,975	457,380	404,834
114 Veteran's Relief	621,249	750,701	881,928	859,090	788,689	683,719	633,029	604,075	624,706	691,664	717,744	759,830	716,195	759,830	94,946
115 Tax Refund	63	64	71	81	244	244	244	244	244	244	244	244	244	244	181
116 Treasurer's O&M	198,581	248,176	305,108	305,615	321,726	359,141	396,940	457,288	510,987	588,767	627,196	669,003	682,274	669,003	483,693
121 Low Income Hsg	353,344	379,284	336,641	116,535	168,783	115,700	110,117	108,570	161,145	164,402	183,852	244,472	257,838	244,472	(95,506)
122 Homeless Hsg	1,080,947	1,254,964	1,059,066	680,479	807,949	487,821	435,039	856,203	556,647	458,056	423,206	527,390	881,545	527,390	(199,402)
123 Stormwater		845,307	254,862	552,488	286,478	513,018		256,328	725,039	705,154	410,262	377,224	509,516	287,384	509,516
126 Parks Special Revenue							1,648,956	1,666,945	1,684,535	1,675,248	1,659,786	2,693,274	2,722,394	2,693,274	2,722,394
135 Trial Court Imp	15,892	63,338	73,936	115,091	148,619	157,029	191,647	125,570	188,783	203,323	211,518	47,125	62,130	47,125	46,237
137 LEOFF I Healthcare	3,500,000	2,070,909	1,011,576	674,473	393,073	188,278	188,278	188,278	188,278	188,278	188,278	188,278	188,278	188,278	(3,311,722)
140 Solid Waste	1,335,832	1,316,183	1,270,666	1,416,223	1,431,491	1,663,037	1,983,234	2,165,320	2,464,713	2,410,753	2,902,971	3,259,810	3,350,273	3,259,810	2,014,441
141 Convention Center	692,619	822,779	1,021,566	1,161,150	1,127,404	1,213,291	1,312,124	1,375,522	1,400,382	1,498,582	1,702,143	1,908,395	1,908,788	1,908,395	1,216,170
142 Victim Witness Assist	90,778	62,418	58,129	59,816	26,684	22,821	15,165	15,360	15,805	25,558	103,418	181,726	182,368	181,726	91,590
154-159 RID #1-7	53,246	50,155	46,698	44,147	42,243	36,574	24,800	30,331	19,406	13,192	25,065	29,236	25,522	29,236	(27,724)
165 WC Drug Fund	762,720	577,842	212,266	63,600	317,634	150,750	147,422	757,702	453,935	799,953	578,670	1,585,310	1,488,623	1,585,310	725,903
166 Auditor's O&M	508,376	617,128	533,193	512,610	487,509	399,556	379,134	412,688	403,749	419,118	445,235	505,281	410,702	505,281	(97,674)
167 Emergency Mgmt	76,766	88,657	2,460	24,882	27,803	131,634	116,953	134,355	194,359	243,817	133,545	180,713	475,627	180,713	398,861
170 Pt Roberts Fuel Tax	311,786	347,660	402,598	481,895	580,832	656,883	755,091	836,243	905,108	968,877	1,050,188	1,109,401	1,123,360	1,109,401	811,574
212-245 Debt Service	230,059	221,412	167,936	19,007	3,127	2,166	1,564	607	612	1,013	1,413	2,013	241,538	2,013	11,479
330 County Parks Imp	127,444	130,599	1,653,774	1,675,271	1,684,331	165,239	86,318	963	1,246	1,265	-	-	-	-	(127,444)
331 Civic Center BMdg	32,211	32,211	1,556,962	1,436,247	1,556,962	2,534,006	2,529,037	2,480,719	2,474,543	2,474,543	2,435,831	2,408,058	2,371,771	2,408,058	2,339,560
334 E Whatcom Reg Res Ctr	89,892	289,063	439,244	59,615	105,208	76,778	112,891	146,546	330,910	316,725	426,738	30,996	11,738	30,996	(78,155)
338 Lummi Nation Lease Fund			2,000,000	2,000,000	2,000,000	2,000,000	1,286,683	2,551,364	2,335,240	2,335,240	2,335,240	2,335,240	2,335,240	2,335,240	2,335,240
339 Birch Bay & Pedestrian			665,374	409,095	495,208	319,490	5,067,710	4,603,809	5,067,710	4,603,809	5,181,340	5,181,340	7,076,029	5,181,340	7,076,029
342 Potter Rd/S Fork Brg			1,654,796	145,166	600,582	778,406	1,157,316	-	-	-	-	-	-	-	-
344 Sheriff Records Mgmt			708,291	279,670	268,615	193,503	184,810	167,618	58,946	58,946	58,946	58,946	58,946	58,946	58,946
345 New Jail Project Fund					1,376,307	1,776,328	2,726,414	2,693,572	2,688,294	1,761,294	1,761,294	1,761,294	1,761,294	1,761,294	1,761,294
348 State St Building Acq					5,042,682	2,370,923	2,690,370	2,653,235	2,597,403	2,437,931	2,400,192	2,399,886	2,400,192	2,399,886	2,399,886
351 Telecomm System Replace					1,971,314	1,022,007	695,004	670,533	-	-	-	-	-	-	-
355 2015 County Rd Safety Prog						801,560	483,343	20,704	-	-	-	-	-	-	-
357 2015 CH FireAlm Juve Rf Imp						253,079	138,207	877,104	638,466	213,784	140,447	213,784	140,447	213,784	140,447
358 2015 Girard St BMdg Imp						467,772	441,541	431,673	409,307	409,307	409,307	409,307	409,307	409,307	409,307
359 CH BMdg Envelope Project						250,000	230,424	2,601,454	2,328,317	2,944,520	2,018,373	2,944,520	2,944,520	2,944,520	2,018,373
361 2015 Silver Lk Park Imp						843,198	798,962	764,122	35,985	323,341	1,884,989	323,341	323,341	323,341	1,884,989
362 2015 Lighthse Marine Pk Imp						250,000	202,040	146,389	71,187	2,717	721	2,717	721	2,717	721
363 2015 South Fork Park Imp						479,000	197,978	78,766	38,351	32,851	32,851	32,851	32,851	32,851	32,851
364 Academy Rd StrmWtr Imp						184,103	159,986	1	1	1	1	1	1	1	1
365 AgHghts Estate/By StrmWtr						588,971	700,812	545,558	426,894	302,186	415,152	302,186	302,186	302,186	415,152
367 Cedar Hills/Eclid StrmWtr						507,026	213,850	703,174	-	-	-	-	-	-	-
368 CrimJus Intrtd Case Mgmt Sys						600,000	594,898	555,876	552,646	552,221	552,221	552,221	552,221	552,221	552,221
369 LandRec/PermMgmt Sys						1,166,126	1,056,200	1,867,597	1,302,141	874,259	760,967	874,259	874,259	874,259	760,967
402 WC Investment Pool	238,615	240,242	291,530	220,216	115,841	122,620	74,418	71,760	91,715	117,532	163,935	189,669	179,537	189,669	(59,078)
444 Ferry System	656,184	424,343	587,9												