



INFO SHEET

Ordinance Establishing a Temporary Speed Limit for Birch Bay Lynden Road

Action

Whatcom County Public Works (WCPW) is asking the County Council to approve a **temporary** speed limit of 35 MPH on Birch Bay Lynden Road from 1850 feet west of Berthusen Road to the Lynden city limits.

Purpose

This action is a recommended public safety measure in response to a summer road project by the Washington State Department of Transportation (WSDOT). Their project, the SR-539 Duffner Ditch – Fish Passage Project, will close the northbound lane of the Guide Meridian (SR-539) for up to 10 working days.

WSDOT has requested to use Birch Bay Lynden Road as part of a detour route for Guide Meridian traffic during construction. The County Engineer has agreed and signed a formal Haul/Detour Agreement with WSDOT for this project. (See Detour Map on page 3)

The closure and detour will increase traffic on Birch Bay Lynden Road, Berthusen Road, and W. Main Street. Per WSDOT, the 2021 Average Daily Traffic on the Guide Meridian in the affected construction area was measured at 17,000 vehicles.

Impact

If approved, this ordinance would allow WCPW to temporarily reduce the speed limit on Birch Bay Lynden Road from 1850 feet west of Berthusen Road to the Lynden city limits during WSDOT's road project. The speed limit would be 35 MPH during the project's construction period. This is a public safety measure in response to increased traffic in the area.

WSDOT's project requires closing the northbound lane of the Guide (SR-539) for up to 10 working days, sometime between July 15- September 30, 2023. The contractor will not be allowed to close the road during holidays or the Northwest Washington Fair, scheduled from August 10-19, 2023.

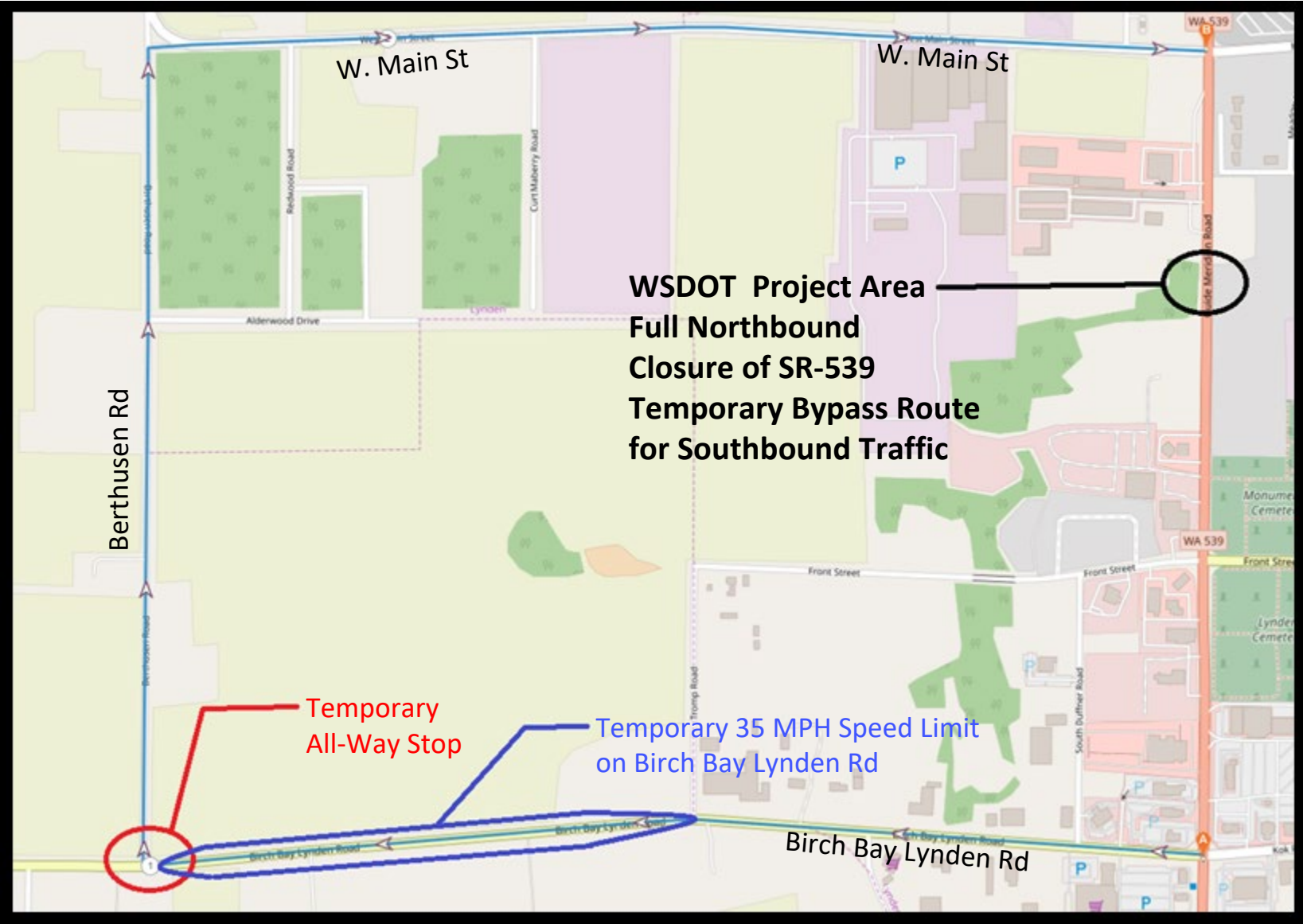
After the closure completion, the ordinance will expire, and the signs will be removed.

Voice Your Opinion

The **Ordinance Establishing a Temporary Speed Limit for Birch Bay Lynden Road** is tentatively scheduled for a public hearing at the Whatcom County Council meeting on April 25, 2023. **This is a chance for community members to voice their opinion on the proposal.**

- [Click here for information on how to participate in a Whatcom County Council meeting public hearing.](#)
- The agenda is usually on the website by the end of the day on the Wednesday before the County Council meeting (in this case, Wednesday, April 19). [Check the meeting agenda to confirm.](#)
- There is a virtual option for most Whatcom County Council meetings. [Click here for information on how to participate virtually.](#)
- Before or during the hearing, you may also submit written testimony to the County Council. You may email the Councilmembers individually or submit your written testimony to: council@co.whatcom.wa.us.

WSDOT Detour Route for SR-539 Guide Meridian Northbound Closure



Northbound SR-539 traffic goes westbound on Birch Bay Lynden Rd to northbound Berthusen Rd to eastbound W. Main St, rejoining SR-539 at the traffic signal at W. Main St and SR-539 Guide Meridian