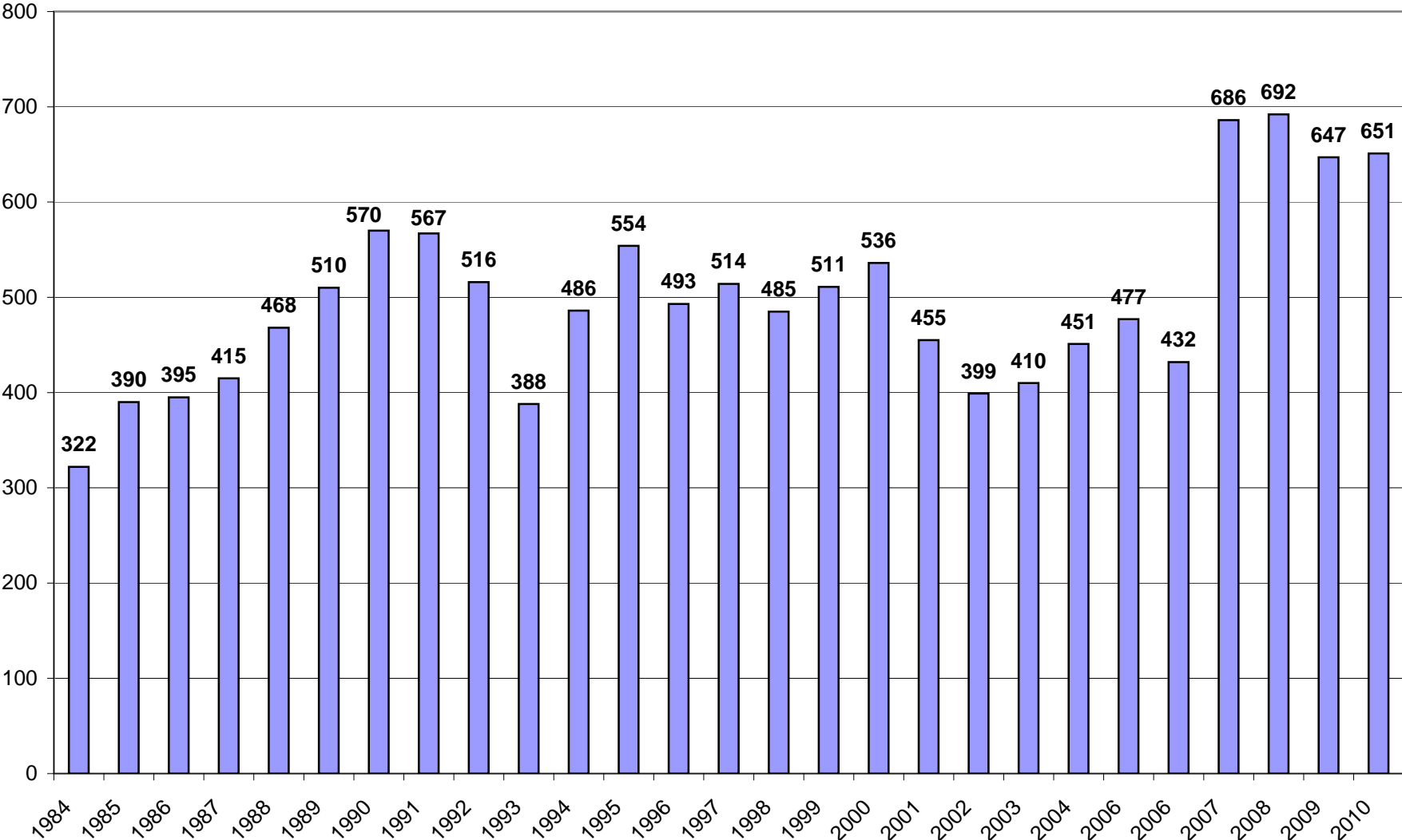
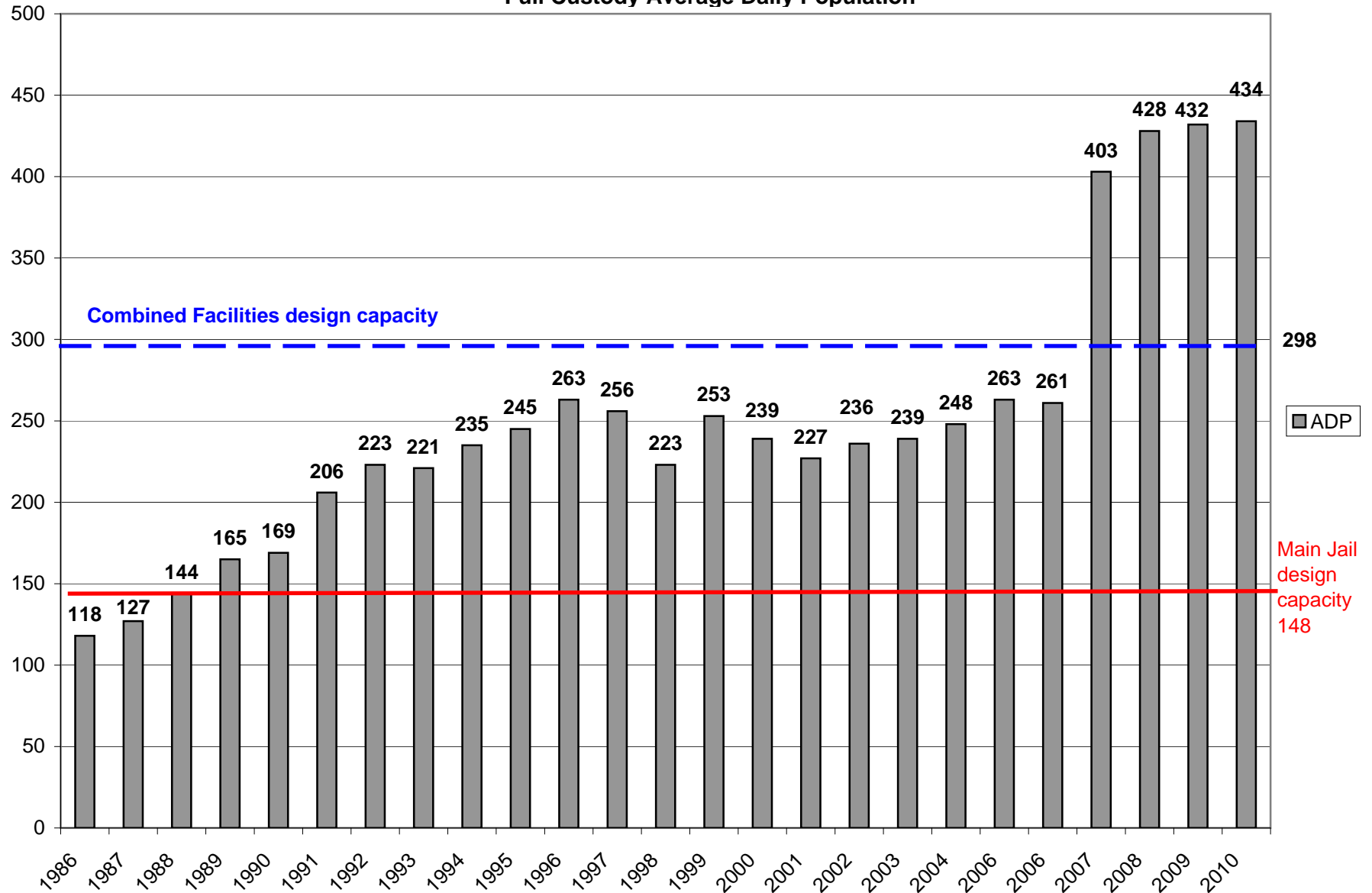


WCJ Monthly Ave. Bookings 1984-2010



Full Custody Average Daily Population



	1984	1985	1986	1987	1988	1989	1990	1991	1992	1993	1994	1995	1996	1997	1998	1999	2000	2001
Annual bookings	3863	4681	4747	4978	5612	6125	6843	6803	6189	5525	6369	6653	5917	6167	5810	6136	6433	5457
Mo. Ave. Bookings	322	390	395	415	468	510	570	567	516	388	486	554	493	514	485	511	536	455
ADP	N/A	N/A	118	127	144	165	169	206	223	221	235	245	263	256	223	253	239	227

Main Jail Only

	1986	1987	1988	1989	1990	1991	1992	1993	1994	1995	1996	1997	1998	1999	2000	2001	2002	2003
ADP	118	127	144	165	169	206	223	221	235	245	263	256	223	253	239	227	236	239

All full custody

	1986	1987	1988	1989	1990	1991	1992	1993	1994	1995	1996	1997	1998	1999	2000	2001	2002	2003
ADP	118	127	144	165	169	206	223	221	235	245	263	256	223	253	239	227	236	239

2002	2003	2004	2006	2006	2007	2008	2009	2010
4789	4919	5409	5723	5608	8234	8306	7767	7811
399	410	451	477	432	686	692	647	651
236	239	248	263	261	403	428	432	434

2004	2006	2006	2007	2008	2009	2010
248	263	261	261	276	283	281

2004	2006	2006	2007	2008	2009	2010
248	263	261	403	428	432	434